



## Lord Buddha Statue for Home

[Read More](#)

**SKU:** 01779

**Price:** ₹22,000.00 inc. GST

**Stock:** instock

**Categories:** [Buddha Statues](#), [Standing Buddha Statues](#), [Statues & Sculptures](#)

### Product Description

**Lord Buddha's Statue for Home describes the life and teachings of Gautama Buddha, serving as useful reminders to use those teachings in everyday life.**

**Material:** Sandstone / Redstone

**Dimension(HWL):** 20 inch

**Position:** Standing

**Height:** 20 inch

### Features of the Lord Buddha Statue for Home:

- A lovely sculpture of Protection/Blessing Buddha is shown above.
- The statue is shown standing over a lotus pedestal.
- His right hand is raised and facing outward symbolically portraying a guard or protection, while the left one is holding one end of the cloth.

### About the blessing Buddha:

- Siddhartha Gautama is "Buddha" which means—the "Awakened One".

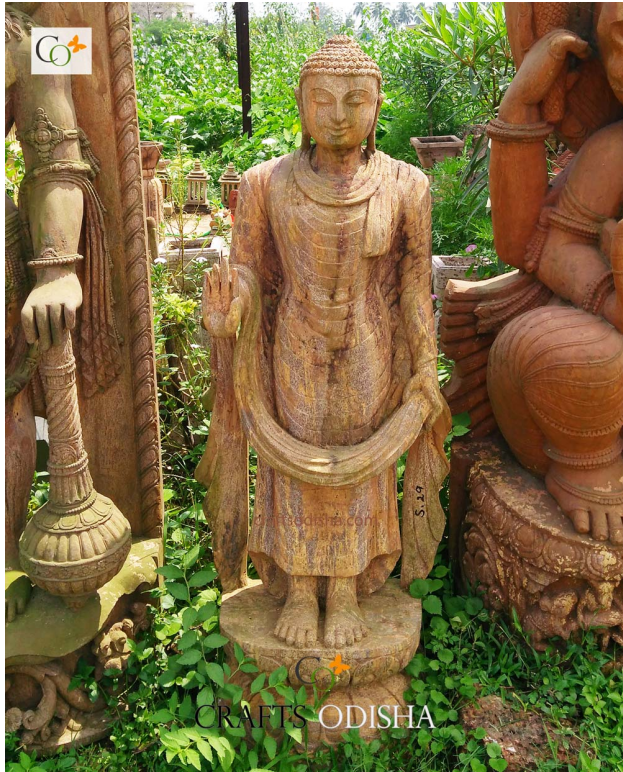
- Born as a royal Prince whose father had safeguarded him against any kind of misery. From the time of his birth until the age of 29, he was given everything that one could desire looks, riches, a beautiful wife, and a healthy son.
- Then at 29, he underwent sickness, old age, and death for the first time. Shattered by what he saw, Goutama realized that all beings were subject to these things, no matter how much they had of worldly goods and grandeur. He could no longer neglect the fact of life.
- So, he went from his home permanently and took up a begging bowl and staff of the Samana to seek the end of his samsara the continuous process of births, deaths, and rebirths.
- Gautama sat under a huge tree that was later called the “knowledge,” or “Bodhi” tree, and proclaimed not to leave it until he achieved the liberating knowledge he aimed for.
- He embarked on a long and difficult time of meditation that culminated in his earning deep insights into human circumstances. Ultimately, in confounding the tricks of the demonic Mara, he believed he did attain Nibbana (or nirvana).

### **Recommendations for creating a space for the Buddha statue:**

- Make the entrance clear with a gate and an attractive arbor or an archway. You may use bamboo fences or plants also.
- A stepping stone leads your eye past the stone pagoda and invites you to speculate on what's around the next corner where you exhibited your Buddha statue.
- Use subtle differences in color and texture around the sculpture which will provide soothing shades of green around the year.
- Because moss doesn't tolerate foot traffic well, place a stepping stone among the moss to allow passage without damaging its soft surface toward your Buddha Statue for Home.
- Give your garden a teahouse or pavilion made of bamboo or wood. Use the structure for entertaining or for viewing the tranquil landscape.
- Stone lanterns shaped like pagodas work well to bring some Japanese style to your Buddha statue providing a charming glow in the evening.
- Use subtle color contrast and bold textural differences to create interest in the flower bed.

### **Cleaning tips for Lord Buddha Statue for Home:**

- Start the cleaning by dampening it using a hose spray. Once it got soaked rinse it thoroughly with a cloth or a sponge.
  - And let it air dry after giving a final bath.
-



## Sandstone Standing Blessing Buddha for Garden

[Read More](#)

**SKU:** 01523

**Price:** ₹85,000.00 inc. GST

**Stock:** instock

**Categories:** [Buddha Statues](#), [Garden Buddha Statue](#), [Garden Sculptures](#), [Standing Buddha Statues](#), [Statues & Sculptures](#)

**Tags:** [Big Buddha Statue for Outdoor](#), [Buddha Decor for Garden](#), [Buddha Garden Landscaping](#), [Buddha Garden Statue](#), [Buddha Home Decor](#), [Buddha Home Decor Statues](#), [Buddha Home Statue](#), [Buddha Stone Sculpture](#), [Buddha Stone Statue Manufacturer](#), [Craft Decoration for Home](#), [Decorative Statues for Home](#), [ft Buddha Statue](#), [Hindu God and Goddess](#), [home décor](#), [Home Statue Decor](#), [Indian Statues](#), [Lord Buddha Idols](#)

### Product Description

**Standing Blessing Buddha for Garden 4.5 ft. A collectible vibrant weathered finish statue to lend the illusion of age. Add this artisanal charm o your garden or lawn, that integrates your garden with perfect harmony. Material:** Sandstone Redstone **Dimension(HWL):** 54 x 20 x 12 inch **Height:** 4.5 ft (Approx.) **Position:** Standing **About the statue posture:** It represents the time when he is ready to teach the four noble truths, after attaining enlightenment. The statue is seen standing right hand raised to the shoulder, palm facing outward, figures are upright and joined, gesturing to Abhayamudra. Abhay means fearlessness. Feet are joined in immobile. Left-hand swings along the left side of his body. The facial features show at peace with life. **About Lord Buddha:** Lord "Buddha" the founder of Buddhism. Buddha means " a person who is awake". Born into a royal family, raised with all lavish and luxury, married, and had a son until the age of twenty-nine he was oblivious about worldly affairs. One day he went to Kapilavastu, on the way he saw an old man, a sick man, and a corpse taken to the cremation ground, each for the first time in his life. Which disquiet him while returning he also encountered a sage who walking in the street with a peaceful expression on his face. So Lord Buddha forsake all worldly things, in search of the ultimate truth and enlightenment. After peregrinating around for six years days and nights he finally found it

under Bodhi tree, near Bodh Gaya by meditating deeply for forty-nine days. He discovered human life is about suffering but deep concentration, spiritual awakening, and ethical behavior are the ways to achieve enlightenment. **Placement suggestion :** For a soothing walk in your garden or lawn, or to destress yourself, place the master peace there along with some color stone, flowers, plants around it to rejuvenate the tranquil atmosphere around it. You can place him near a water body or fountain, sidewalk, restaurant, park, etc. It represents the earth element so placing him on the Northeast, southwest, and center will be beneficial. **Care:** Sandstone statues are more beautiful handling and age, dusting can be done using a cloth or broom.

---



## Vajra Tara Buddhist Goddess Bust Statue

[Read More](#)

**SKU:** 01773

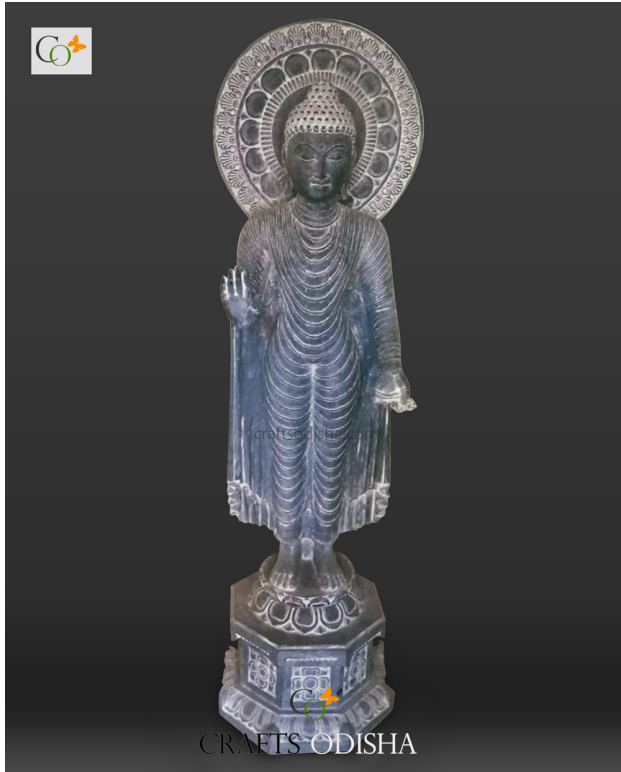
**Price:** ₹170,000.00 inc. GST

**Stock:** onbackorder

**Categories:** [Buddha Statues](#), [Garden Buddha Statue](#), [Standing Buddha Statues](#), [Statues & Sculptures](#)

### Product Description

---



## Standing Granite Black Stone Blessing Buddha Home Garden Statue Decor 4 ft

[Read More](#)

**SKU:** 01552

**Price:** ₹210,000.00 inc. GST

**Stock:** onbackorder

**Categories:** [Garden Buddha Statue](#), [Buddha Statues](#), [Garden Sculptures](#), [Standing Buddha Statues](#), [Statues & Sculptures](#)

**Tags:** [Big Buddha Statue for Outdoor](#), [Black Granite Stone Statue Manufacturer](#), [Black Stone Buddha Statue](#), [Buddha Decor for Garden](#), [Buddha Garden Landscaping](#), [Buddha Garden Statue](#), [Buddha Home Decor](#), [Buddha Home Decor Statues](#), [Buddha Home Statue](#), [Buddha Stone Sculpture](#), [Buddha Stone Statue Manufacturer](#), [Craft Decoration for Home](#), [Decorative Statues for Home](#), [ft Buddha Statue](#), [Granite Stone Buddha Statue](#), [Hindu God and Goddess](#), [home décor](#), [Home Statue Decor](#), [Indian Statues](#), [Lord Buddha Idols](#), [Muguni Stone Statue](#)

### Product Description

This Standing Granite Black Stone Blessing Buddha Home Garden Statue 4 ft is fine craftsmanship from the lands of Odisha. A traditional and subtle sculpture with a distressed finish engaging impression through its great size. This gigantic traditional and subtle sculpture depicts the distressed Buddha and to behold your gaze. To add tranquility to your kickback area use this piece of great Kalingan art. Place it in your kickback area would add tranquility.

**Material:** Black stone / Granite Stone **Dimension(HWL):** 48 x 24 x 14 inch **Height:** 4 ft

**Position:** Standing

**The story behind Buddha's posture in this granite statue:** This posture indicates the story of the day after having attained enlightenment when he is ready to teach the four noble truths to people. Here Buddha is standing with his right hand raised towards the shoulder, gesturing to the Abhayamudra, and his feet are planted firmly on the ground. In Sanskrit Abhay means fearlessness. So here Buddha is providing the wisdom that'll remove the fear of the



unknown. And his left-hand hangs down on the side of his body. His facial expression shows that he is at peace with life.

**About Lord Buddha:** Siddhartha Gautama, the son of king Shudhodana and Queen Maya of the Shakya clan. A presage was given at his naming ceremony, that either he would be a powerful king or a spiritual leader. Although his father tried every effort to keep him away from all means of suffering and sorrows of life, raised him with wealth and luxury. At the age of twenty-nine, he was already married, and had a son. Then one day he saw an old-aged man, a sick person, at a funeral and a religious ascetic. He realizes life is full of suffering, which arises from want or loss. So he decided to leave the lavish life, that he was leading so far, in search of a way to escape from this suffering. It took him six long years to find the answer to all his quests, which he discovered finally by meditating forty-nine days under a fig tree, near Bodh Gaya. He attained enlightenment and became "Buddha" and hence became the founder of Buddhism. Buddha means "a person who is awake" or "a knower". In his enlightenment, he discovered the mind is at total peace, and the soul is merged with the universe. This state of mindfulness arises only when a person's desire and sufferings go away completely.

**How to make a statement with this beautiful statute at your place: Using this craft decoration for home, office, and lawn:** Place this graceful statue near a water body, or fountain, close to a pillar. You can keep it in your garden or lawn area for a soothing atmosphere, with plants, flowers, and trees beneath it adding more rejuvenation to the propitiate. You can place it close to a water body or fountain, along a sidewalk, your restaurant, or park that you just designed, etc. As it represents the earth element, so placing this Buddha statue in the Northeast, southwest, and center will be more auspicious according to Vastu.

**How to clean to get rid of dust:** Cleaning the Buddha statute should be a pain. With a dry cloth or broom, it is enough to get rid of the dirt. Clean it once every month to keep your garden or home looking stunning.

**More about the black stone and carving:** The traditional art form of Stone Carving is one of the oldest continuing traditions in the world in Odisha, especially at Ratnagiri, Lalitgiri, and Udaygiri and in and around Puri. So bring a piece of history of 2nd century India to your home.

---



## Sand Stone Standing Blessing Buddha Statue for Outdoor

[Read More](#)

**SKU:** 01522

**Price:** ₹140,000.00 inc. GST

**Stock:** onbackorder

**Categories:** [Garden Buddha Statue](#), [Buddha Statues](#), [Garden Sculptures](#), [Standing Buddha Statues](#), [Statues & Sculptures](#)

**Tags:** [Big Buddha Statue for Outdoor](#), [Buddha Decor for Garden](#), [Buddha Garden Landscaping](#), [Buddha Garden Statue](#), [Buddha Home Decor](#), [Buddha Home Decor Statues](#), [Buddha Home Statue](#), [Buddha Stone Sculpture](#), [Buddha Stone Statue Manufacturer](#), [Craft Decoration for Home](#), [Decorative Statues for Home](#), [Hindu God and Goddess](#), [home décor](#), [Home Statue Decor](#), [Indian Statues](#), [Lord Buddha Idols](#)

### Product Description

**Sand Stone Standing Blessing Buddha Statue for Outdoor 6 ft. A weathered sculptured 6 ft tall statue, to last a lifetime with proper care. The piece would look especially stunning if you place it among plants and flowers with coloring stone, beneath the statue. Material:** Sandstone Redstone **Dimension(HWL):** 72 x 36 x 18 inch **Height:** 6 ft (Approx.) **Statue Position:** Standing **About standing Buddha statue:** The statue is depicted standing to keep its right foot behind starting to raise off the ground, and its left hand raised in the gesture of Abhaya mudra. The Abhaya mudra represents fearlessness, protection, and peace. The left hand raised towards the shoulder height, palm facing outward. The right-hand hangs down. This posture is that time where he was returning to earth after giving a sermon of Dharma in heaven. **About Lord Buddha:** "Buddha" means a person who is awake. Born as a prince of the Shakya tribe, the son of King Shudhodana and Queen Maya. Raised with sumptuous and palatial. He married and had a son also. He was shielded from any sorrow or suffering until he reaches the age of 29. One day he came across an old, sick, and corpse first time in his life. He realizes that no wealth can extricate him from the suffering of the universe. so he left his lavish life and began his journey of spiritual quest. For the next six long years, he meets different monks to follow extreme starvation for days but none could able

earn him an answer, finally, he choose to take the middle path, and through deep meditation for 49 days, he finally attain enlightenment under a fig tree in Bodh Gaya. He spent the remaining life teaching others to attain enlightenment. His teachings include four noble truths and the eight-fold path, which can be achieved with ethical conduct and the right attitude.

**Placement option of the statue:** Peace is a state of mind, which affects the place we live. And the statues of Lord Buddha are the embodiment of peace and harmony, placing a statue of him amplifying the energy into our life. If you like to destress in your, garden or lawn, then this posture of Buddha would be beneficial to place. It will rejuvenate the spiritual energy if you set up him near a fountain, or among, tree or flowering plant. Also as his hand gesture in the fearless pose, placing him at the entrance facing outward will keep the evil elements at bay. Buddha made from earth elements should always place in the northeast, southwest, or at the center of your home or office. Various other options like a park, restaurant, side of the walkway, etc. where you can statue the showpiece. **Care:** Dusting should be done by using a cloth or broom periodically.



## Green Stone Standing Buddha Statue 7.5 inch

[Read More](#)

**SKU:** 01319

**Price:** ₹8,000.00 inc. GST

**Stock:** outofstock

**Categories:** [Buddha Statues](#), [Standing Buddha Statues](#)

**Tags:** [Green Stone Buddha Idols](#), [Standing Buddha Statue](#)

### Product Description

**Green Stone Standing Buddha Statue 7.5 inches.** The light darkish finish allows this statue to pop against its surrounding. Perfectly fit in any shelf, mantle, accent table and spread calm around the surrounding. **Material:** Greenstone **Dimension(HWL):** 7.5 x 3 x 2 inch



**Height:** 7.5 inch **Position:** Standing **About the statue posture:** Each statue of Lord Buddha features some physical attributes which are called Mudras. Each Mudra indicates, teaching, meditating, or enlightenment. The standing Buddha statue delineates the period of Lord Buddha rising to teach his findings after attaining enlightenment. Both feet placed side by side, immobilized. And ready to begin his walk and preaching. The left hand is raised towards the chest level holding a prayer bead. And the right is hanging naturally in the side. Lord Buddha addresses his first sermon at Sarnath, to his disciples. His first sermon includes the four noble truths and the eight-fold path. **About Lord Buddha:** Lord "Buddha" the framer of Buddhism. Buddha means " a person who is awake". Born into a royal family, raised with all lush and luxuriant, married, and had a son until the age of twenty-nine he was incognizant about worldly sufferings. One day on the way to went to Kapilavastu, he saw an old man, a sick, and a corpse each for the first time in his life. Which inquietude him, the same day he too encountered a sage who walking in the street with a peaceful expression on his face. So Lord Buddha disowned all worldly things, in search of truth and enlightenment to escape from the universal suffering. After meandering around for six years finally found it under the Bodhi tree, near Bodhi Gaya by meditating deeply for forty-nine days. And ascertain that human life is about suffering but deep concentration, transcendence, and moral conduct are the ways to one can free himself from pain (the suffering). **Placement suggestion :** The beautiful piece standing on a lotus pedestal is ideal for a home, office, or café. Placing on cabinets, accent tables, in the showcase will elevate the look of your décor. Spreading the feeling of calm, combined with its classic black yet rich modern look. **Care:** You can dust the statue using cloth or broom.

---



## Pink Stone Standing Blessings Buddha Statue 6 inch 14

[Read More](#)

**SKU:** 00144

**Price:** ₹6,000.00 inc. GST

**Stock:** outofstock

**Categories:** [Buddha Statues](#), [Standing Buddha Statues](#), [Statues & Sculptures](#), [Stone](#)

## Product Description

“All things appear and disappear because of the concurrence of causes and conditions. Nothing ever exists entirely alone; everything is in relation to everything else.”

This mesmerizing standing Buddha Signifies grace and internal beauty. Right hand raised, facing outward, left hand dangles along left side of body. Standing with both foot on the ground. It represents a time when the Buddha was returning to earth after delivering a sermon on the Dharma in Heaven, and was being accompanied by Lord Indra and Lord Brahma. So to feel the presence of the heavenly soul around in your house and office premises pay a small amount and make this statuette yours.



## Standing soapstone Buddha car dashboard idol 2.75in

[Read More](#)

**SKU:** 00253

**Price:** ₹3,000.00 inc. GST

**Stock:** outofstock

**Categories:** [Buddha Statues](#), [Standing Buddha Statues](#), [Statues & Sculptures](#)

## Product Description

Lord Buddha is the spiritual guru and preacher of the religion Buddhism. His original name is Gautama Buddha, who was born as a prince but left his kingdom, family, all wealth and riches to attain enlightenment and discover the truth behind happiness, beauty and life. Here the Buddha is carved out of soapstone and presented in standing posture. This pose signifies grace and internal beauty. Right hand rose, facing outwards, and left hand dangles along left side of the body. So bring this statue home or place it in your office to spread the message of beauty, enlightenment and grace.