



Buddha Stone Statue Antique Style 1.5 feet

[Read More](#)

SKU: 01841

Price: ₹25,000.00 inc. GST

Stock: instock

Categories: [Garden Buddha Statue](#), [Buddha Statues](#), [Garden Sculptures](#), [Sitting Buddha Statues](#), [Statues & Sculptures](#)

Product Description



Lord Buddha Statue for Home

[Read More](#)

SKU: 01779

Price: ₹22,000.00 inc. GST

Stock: instock

Categories: [Buddha Statues](#), [Standing Buddha Statues](#), [Statues & Sculptures](#)

Product Description

Lord Buddha's Statue for Home describes the life and teachings of Gautama Buddha, serving as useful reminders to use those teachings in everyday life.

Material: Sandstone / Redstone

Dimension(HWL): 20 inch

Position: Standing

Height: 20 inch

Features of the Lord Buddha Statue for Home:

- A lovely sculpture of Protection/Blessing Buddha is shown above.
- The statue is shown standing over a lotus pedestal.
- His right hand is raised and facing outward symbolically portraying a guard or protection, while the left one is holding one end of the cloth.

About the blessing Buddha:

- Siddhartha Gautama is "Buddha" which means—the “Awakened One”.
- Born as a royal Prince whose father had safeguarded him against any kind of misery. From the time of his birth until the age of 29, he was given everything that one could desire looks, riches, a beautiful wife, and a healthy son.
- Then at 29, he underwent sickness, old age, and death for the first time. Shattered by what he saw, Goutama realized that all beings were subject to these things, no matter how much they had of worldly goods and grandeur. He could no longer neglect the fact of life.
- So, he went from his home permanently and took up a begging bowl and staff of the Samana to seek the end of his samsara the continuous process of births, deaths, and rebirths.
- Gautama sat under a huge tree that was later called the “knowledge,” or “Bodhi” tree, and proclaimed not to leave it until he achieved the liberating knowledge he aimed for.
- He embarked on a long and difficult time of meditation that culminated in his earning deep insights into human circumstances. Ultimately, in confounding the tricks of the demonic Mara, he believed he did attain Nibbana (or nirvana).

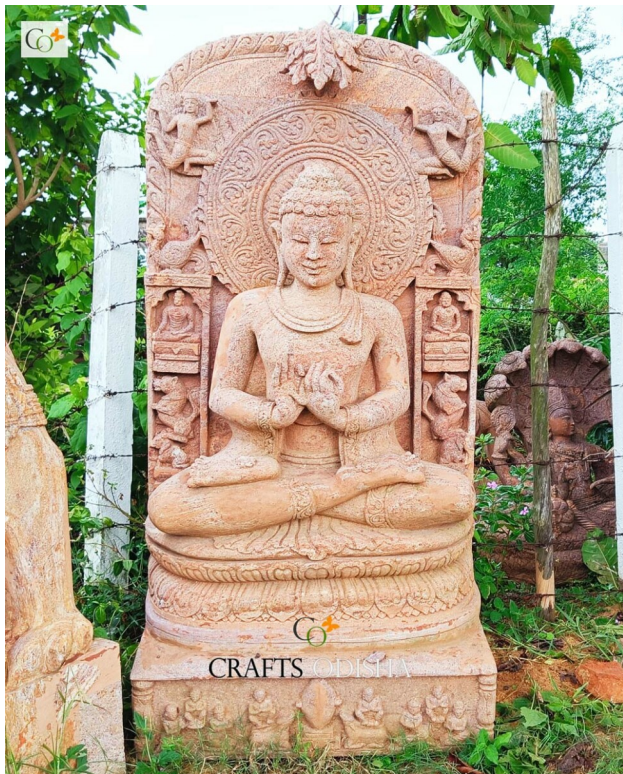
Recommendations for creating a space for the Buddha statue:

- Make the entrance clear with a gate and an attractive arbor or an archway. You may use bamboo fences or plants also.
- A stepping stone leads your eye past the stone pagoda and invites you to speculate on what's around the next corner where you exhibited your Buddha statue.

- Use subtle differences in color and texture around the sculpture which will provide soothing shades of green around the year.
- Because moss doesn't tolerate foot traffic well, place a stepping stone among the moss to allow passage without damaging its soft surface toward your Buddha Statue for Home.
- Give your garden a teahouse or pavilion made of bamboo or wood. Use the structure for entertaining or for viewing the tranquil landscape.
- Stone lanterns shaped like pagodas work well to bring some Japanese style to your Buddha statue providing a charming glow in the evening.
- Use subtle color contrast and bold textural differences to create interest in the flower bed.

Cleaning tips for Lord Buddha Statue for Home:

- Start the cleaning by dampening it using a hose spray. Once it got soaked rinse it thoroughly with a cloth or a sponge.
- And let it air dry after giving a final bath.



Amitabha Buddha Sandstone 5.5 feet

[Read More](#)

SKU: 01741

Price: ₹230,000.00 inc. GST

Stock: instock

Categories: [Buddha Statues](#), [Garden Buddha Statue](#), [Garden Sculptures](#), [Sitting Buddha Statues](#), [Statues & Sculptures](#)

Product Description



Sandstone Big Size Dharma Chakra Sitting Buddha Statue Outdoor Park 10 ft

[Read More](#)

SKU: 01705

Price: Call for price

Stock: instock

Categories: [Buddha Statues](#), [Garden Buddha Statue](#), [Sitting Buddha Statues](#), [Statues & Sculptures](#)

Tags: [Big Buddha Statue for Outdoor](#), [Big Sandstone Stone Buddha Statue Manufacturer](#), [Buddha Decor for Garden](#), [Buddha Garden Landscaping](#), [Buddha Garden Statue](#), [Buddha Statue for Home Decor](#), [Buddha Stone Statue for Interior Designing](#), [Buddha Stone Statue Manufacturer](#), [Sandstone Buddha Sculpture for Villa](#), [Sandstone Buddha Statue for Home Decoration](#), [Sandstone Stone Buddha Statue Manufacturer](#)

Product Description



Sandstone Large Sitting Meditating Buddha Sculpture

[Read More](#)

SKU: 01676

Price: Call for price

Stock: instock

Categories: [Buddha Statues](#), [Garden Buddha Statue](#), [Sitting Buddha Statues](#), [Statues & Sculptures](#)

Tags: [Big Buddha Statue for Outdoor](#), [Buddha Decor for Garden](#), [Buddha Garden Statue](#), [Buddha Home Decor Statues](#), [Buddha Statue for Home Decor](#), [Buddha Statue Online for Home and Garden](#), [Buddha Stone Statue for Interior Designing](#), [Buddha Stone Statue Manufacturer](#)

Product Description



Kanda Stone Rough Finish Style Sitting Buddha Statue for Outdoor

[Read More](#)

SKU: 01665

Price: ₹140,000.00 inc. GST

Stock: instock

Categories: [Buddha Statues](#), [Garden Buddha Statue](#), [Sitting Buddha Statues](#), [Statues & Sculptures](#)

Tags: [Big Buddha Statue for Outdoor](#), [Buddha Garden Landscaping](#), [Buddha Garden Statue](#), [Buddha Home Decor Statues](#), [Buddha Stone Statue for Interior Designing](#), [Buddha Stone Statue Manufacturer](#)

Product Description



Sandstone Standing Blessing Buddha for Garden

[Read More](#)

SKU: 01523

Price: ₹110,000.00 inc. GST

Stock: instock

Categories: [Buddha Statues](#), [Garden Buddha Statue](#), [Garden Sculptures](#), [Standing Buddha Statues](#), [Statues & Sculptures](#)

Tags: [Big Buddha Statue for Outdoor](#), [Buddha Decor for Garden](#), [Buddha Garden Landscaping](#), [Buddha Garden Statue](#), [Buddha Home Decor](#), [Buddha Home Decor Statues](#), [Buddha Home Statue](#), [Buddha Stone Sculpture](#), [Buddha Stone Statue Manufacturer](#), [Craft Decoration for Home](#), [Decorative Statues for Home](#), [ft Buddha Statue](#), [Hindu God and Goddess](#), [home décor](#), [Home Statue Decor](#), [Indian Statues](#), [Lord Buddha Idols](#)

Product Description

Standing Blessing Buddha for Garden 4.5 ft. A collectible vibrant weathered finish statue to lend the illusion of age. Add this artisanal charm o your garden or lawn, that integrates your garden with perfect harmony. Material: Sandstone Redstone **Dimension(HWL):** 54 x 20 x 12 inch **Height:** 4.5 ft (Approx.) **Position:** Standing **About the statue posture:** It represents the time when he is ready to teach the four noble truths, after attaining enlightenment. The statue is seen standing right hand raised to the shoulder, palm facing outward, figures are upright and joined, gesturing to Abhayamudra. Abhay means fearlessness. Feet are joined in immobile. Left-hand swings along the left side of his body. The facial features show at peace with life. **About Lord Buddha:** Lord "Buddha" the founder of Buddhism. Buddha means " a person who is awake". Born into a royal family, raised with all lavish and luxury, married, and had a son until the age of twenty-nine he was oblivious about worldly affairs. One day he went to Kapilavastu, on the way he saw an old man, a sick man, and a corpse taken to the cremation ground, each for the first time in his life. Which disquiet him

while returning he also encountered a sage who walking in the street with a peaceful expression on his face. So Lord Buddha forsake all worldly things, in search of the ultimate truth and enlightenment. After peregrinating around for six years days and nights he finally found it under Bodhi tree, near Bodh Gaya by meditating deeply for forty-nine days. He discovered human life is about suffering but deep concentration, spiritual awakening, and ethical behavior are the ways to achieve enlightenment. **Placement suggestion :** For a soothing walk in your garden or lawn, or to destress yourself, place the master peace there along with some color stone, flowers, plants around it to rejuvenate the tranquil atmosphere around it. You can place him near a water body or fountain, sidewalk, restaurant, park, etc. It represents the earth element so placing him on the Northeast, southwest, and center will be beneficial. **Care:** Sandstone statues are more beautiful handling and age, dusting can be done using a cloth or broom.



Pink Soft Stone Earth Touching Sitting Buddha Moorti Statue 8 inch

[Read More](#)

SKU: 01438

Price: ₹10,000.00 inc. GST

Stock: instock

Categories: [Buddha Statues](#), [Sitting Buddha Statues](#)

Tags: [Buddha Statue for Home Decor](#), [Buddha Statue for Table Decor](#), [Lord Buddha Idols](#), [Sitting Buddha Statue](#), [Soapstone buddha statue](#), [Table Top Decor](#), [Table Top Idols](#), [Table Top Statues](#)

Product Description

Pink Soft Stone Earth Touching Sitting Buddha Moorti Statue 8 inches, a fantastic fit for the interior design. Demonstrating the earth witness mudra in elegance.

Material: Soapstone/ Pinkstone **Dimension(HWL):** 8 x 5 x 2.5 inch **Position:** Sitting Lord Buddha, was born to king Shudhodana of the Shakya tribe. He had an opulent and sorrow-free life until the age of 29. He encountered the defining traits of humanity an old man, a sick, and dead. Made him disturbed while he saw a monk walking peacefully, and calmly. He realized that the pain and suffering are awaited all humanity, it won't spare even a prince or king like him.

That is when he gave up his lavish life left the palace in search of a solution to relieve from the universal suffering. Lord Buddha then devoted himself to deep meditation, in the first stage he saw past life and the cycle of birth and rebirth(samsara). In the second stage, he found the law that guides the endless cycle (Dharma). In the third stage, he saw the consequences of good and bad (Karma) and gained enlightenment, a perfect state of wisdom, and intellectual. which he later share with others on how to achieve it. The above statue depicts the form of Bhumisparsha mudra of Buddha while meditating, there is a story that lies behind this mudra. While meditating there is a demon named Mara who intervene Buddha from achieving the final goal, Lord Buddha then touches and called the earth for a witness, the earth goddess appeared and dislodge the demon and bears the witness of the enlightenment. In this form Lord Buddha is seen sitting on a lotus platform with right hand held flats on the right knee touching the earth, while the left hand resting on his lap, palm face-up. Eyes are closed in deep meditation. The most favorable benefit of this mudra is that will support you in any room you want to place. As it represents wisdom and calmness, it helps to transform agitation into wisdom. Beneficial for health issues. **Placement:** To rip the benefits place him facing east, as Lord Buddha used to meditate at sunrise. You can also place him in the study, living, library, mantle, on a desk too. as it represents the earth element you can place him in the center too. **Care:** The easiest nonporous material is soapstone, so no excessive cleaning attention is required. Use a broom or a piece of cloth to dust the surface is enough to maintain the shine.



Unique Soap Stone Meditating Buddha On Snake Statue 6 inch

[Read More](#)

SKU: 01409

Price: ₹6,000.00 inc. GST

Stock: instock

Categories: [Buddha Statues](#), [Sitting Buddha Statues](#), [Statues & Sculptures](#)

Tags: [buddha statue](#), [Designer Buddha Idol](#), [Lord Buddha Idols](#), [Sitting Lord Buddha Statue](#), [Soapstone buddha statue](#), [stone buddha statue](#)

Product Description

Unique Soap Stone Meditating Buddha On Snake Statue 6 inch. An excellent choice for wisdom cum peacefulness in one statue. The tranquil statue makes a brilliant choice to add to the interior.

Material: Soapstone/Pinkstone **Dimension(HWL):** 6 x 3.5 x 1.5 inch **Position:**

Sitting Siddhartha Guatama was born to queen Maya and King Shudhodana, he was raised in all wealth and opulence. At the age of 16, he married a princess named Yashodhara together they had a son named Rahula. Until the age of 29, Gautama was unaware of the universal suffering of human traits. One day on his way to Kapilavastu Gautama approached an old, sick and corpse which made him think that no wealth or material pleasure will protect him, everyone is subject to old age, sickness, and death the definite suffering. While on the way to returning to his palace he encountered a holy monk who was walking peacefully on the road. these incidents made Siddhartha Gautama o find a solution to the worldly suffering of all humans. He left his royal life in search of the quest. After 6 years of hunting for the solution, he went to many monks, made himself into starvation, self-deprivation but getting no answer to his question he finally sat beneath a bodhi tree in Bodh Gaya when he attain enlightenment. Later he shared his discovery with his disples. The above statue captured the moment from his Dharmachakra mudra while meditating. The statue is seen sitting, on a coil in Vajrasana pose known as double lotus pose. While Lord Buddha was in deep meditation he didn't acknowledge heavy rain coming and tried to sweep him away, seeing this the seven-headed snake wrapped around him and lifted him out of the water. And spread the hood over the head of the Buddha to protect him. As statue seen above. Both hands are held near the chest, forming a circle with index and thumb, the circle represents the wheel of Dharma. This mudra, in front of the chest, symbolizes the teaching is straight from his heart. This unique fusion statue is worth keeping home at. Which is beneficial for people seeking academic and spiritual development in life. As both signify wisdom and intellectual, so keeping it in your space amplifies the calm and peacefulness in the surrounding. Rooms like study, prayer, library, mantle are a few recommended options to keep the statue. A perfect gifting option too for your loved ones. **Placement:** Northeast and southwest are favorable for, eternal knowledge. Face him to the east (Where the sun rises)where ever you desire to statue at. **Care:** Soapstone is a nonporous material so the cleaning made it so easy. Dusting the surface with cloth or broom is enough to ward off the dust.



Green Stone Small Lord Meditating Buddha Idol 4.5 inch

[Read More](#)

SKU: 01408

Price: ₹6,000.00 inc. GST

Stock: instock

Categories: [Buddha Statues](#), [Sitting Buddha Statues](#)

Tags: [buddha statue](#), [Green Colour Stone Buddha Statue](#), [Green Stone Buddha Idols](#), [Lord Buddha Idols](#), [Meditating Buddha Sculpture](#), [Meditation Buddha Statue](#), [Sitting Buddha Statue](#), [Sitting Lord Buddha Statue](#)

Product Description



Green Stone Blessing Buddha Sitting Statue 8 inch

[Read More](#)

SKU: 01318

Price: ₹10,000.00 inc. GST

Stock: instock

Categories: [Buddha Statues](#), [Sitting Buddha Statues](#)

Tags: [Blessing Buddha Statue](#), [Green Colour Stone Buddha Statue](#), [Lord Buddha Idols](#), [Meditating Buddha Sculpture](#), [Meditation Buddha Statue](#), [Sitting Lord Buddha Statue](#)

Product Description

Green Stone Blessing Buddha Sitting Statue 8 inches. The unique statue is adorned with dark grey, sure to capture attention from every angle. Spread protection and calm around the home.

Material: Greenstone **Description(HWL):** 8 x 4 x 1.5 inch

Height: 8 inch **Position:** Sitting Lord Buddha, the founder of Buddhism. Born and named, Sidhartha (one who attains goal). The prince of the Shakya tribe. Away from the harsh reality of worldly sorrow, he was raised and brought up with all wealth and opulence. married and had a son. Until the age of twenty-nine, an incident changed his life. When he was on his way to Kapila Vastu he saw an old person, a sick man, and a corpse. It makes him unsettle of the harsh truth, that every human on earth is subject to the fate of getting old, sick, and dead, and no opulence or pleasure will protect him from getting the dukkha. He also saw a monk who is walking with peace and serenity on his face. All these made him down the material pleasure of the royal life and he went on the spiritual quest. For six long years, he follows many teachers' instructions, yogi practices, got into self-mortification, self-deprivation but did not find any specific solution to his quest. That is when he decided to find a middle path instead of going any extreme. He finally sat under a fig tree in deep meditation and attain enlightenment. From then he is known as Lord Buddha. Every posture and gesture of him have some meaning behind them. Like the Blessing Buddha here. Is seen sitting on a pedestal on Vajrasana pose known as the double lotus pose. The right hand is raised in front of the chest palm faced outward in blessing mudra or Abhay mudra representing a shield overcoming fear. This mudra also symbolizes protection against fear, anger, and delusion. The left-hand lies on the lap of the left thigh, which is a symbol of generosity. The blessing Buddha statue is a reflection of divine protection against fear and anger. It spread positive and peacefulness in the surrounding. Keep the Statue at any area you need blessing upon. **Placement:** Blessing Buddha or protection Buddha is beneficial if kept at the entrance, it will keep the negative forces outside. Keep in office, home, or any area where you need healing from Vaastu-related issues. **Care:** Just wiping down the statue with a cloth or broom is enough to ward off the dirt.



Serpentine Gaurahara Stone Sitting Blessing Buddha Statue 8.5 inch

[Read More](#)

SKU: 01313

Price: ₹12,000.00 inc. GST

Stock: instock

Categories: [Buddha Statues](#), [Sitting Buddha Statues](#)

Tags: [Sitting Buddha Statue](#)

Product Description

Serpentine Gaurahara Stone Sitting Blessing Buddha Statue 8.5 inches. The soft texture and the radiant of the stone made the scalp ravishing. Artisanal charm with the illusion of age.

Material: Serpentine stone/Gaurahara stone. **Dimension(HWL):** 8.5 x 4 x 2.2 inch

Height: 8.5 inch **Position:** Sitting "Buddha" the term generally means a person who is awake. In Buddhism, there is seven-factor of awakening.

1. Mindfulness
2. Investigation(of the nature of reality)
3. Determination
4. Concentration
5. Equanimity
6. The effort
7. Joy

These seven factors help us to journey in the spiritual path and lead us to awaken. Lord Buddha was born to king Shudhodana and queen Mahamaya, he was named Prince Siddhartha Gautama. Siddhartha was raised in all luxury and privileges one can dream of, unaware of any sorrow or suffering of the outside world, he married and had a son. One day he ventured out of his palace wall, there when he encountered three aspects of life when he saw an old, a sick, and a dead. He realized that it's a human fate and no individual can escape from this, everyone will

be subject to get old, sick, and dead. At the same time, he saw a holy monk who was walking with an expression of peacefulness on his face. All these incidents made him search for an answer to all the suffering a human faces. At the age of 29, he gave up his royal and lavish life and left for the spiritual quest. For six consecutive years, he follows many practices, extreme starvation, and self-deprivation but found no result to his quest, so he found a middle way from the two extremes and sat beneath a fig tree, in deep meditation, and finally achieve enlightenment. Mudra is essential which evokes particular ideas of his gestures significant to his life. The blessing Buddha statue is seen sitting with a double lotus pose. The right hand is raised in front of the chest, faced outward. This represents protection or a shield overcoming fear. Protection from fear, anger, and mirage. Left-hand lies up on left lap extended upward, symbolizing generosity. As the pose of blessing Buddha gives a feeling of divine protection, so you can place him in any room or area you want positive energy/Blessing or protection. It also cures the Vaastu-related default so keeping a statue from blessing Buddha in that area may help to overcome the defect. **Placement:** Keeping the Blessing Buddha statue at the entrance of your home, will help to keep all the negative and evil forces outside. Face him outside the entrance. **Care:** Gentle dusting with a cloth or soft brush, enough to keep your statue away from dirt.



Granite Stone Sitting Dharmachakra Buddha Statue 31 inch

[Read More](#)

SKU: 01254

Price: ₹125,000.00 inc. GST

Stock: instock

Categories: [Buddha Statues](#), [Garden Buddha Statue](#), [Sitting Buddha Statues](#), [Statues & Sculptures](#)

Tags: [Big Buddha Statue for Outdoor](#), [Black Granite Stone Statue Manufacturer](#), [Buddha Decor for Garden](#), [Buddha Garden Landscaping](#), [Buddha Garden Statue](#), [Buddha Statue for Home Decor](#), [Buddha Stone Statue for Interior Designing](#), [Buddha Stone Statue Manufacturer](#)

Product Description

Granite Stone Sitting Dharmachakra Buddha Statue 31 inch. A unique dash of black color, capture attention from every angle. An gorgeous and graceful option for your interior.

Material: Granite/Blackstone **Dimension(HWL):** 31 x 21 x 10 inch

Height: 2.5 ft **Position:** Sitting

Buddha "A person who is awake", the founder of Buddhism. He was the son of a king, brought up in all lush and opulence. married and had a son. Until the age of 29, he was away from worldly sorrow and reality. one day he encountered the harsh side of human definite fat of being old, sick, and dead. He realized no wealth will prevent him from sickness, old age, or death. when he saw a monk, there when he realized he have to find a way to end the Dukha and overcome this universal suffering. That is when he forsakes all the lavish and royal life and sets out in search of the answer. six years later with deep meditation and concentration, he found enlightenment. and the rest of his life he spent teaching others about his findings and how to achieve them.

He gave his first sermon at Sarnath to his disples. His first teaching was about the Four noble truths and the eight-fold path. The above statue of Buddha is the moment of his teaching after gaining enlightenment. In this statue Buddha is seen sitting on a lotus platform, in both legs folded each other known as double lotus pose. The lotus here depicts the message that even after growing in dirty water it produces a beautiful flower-like wife all men have the potential to overcome suffering and be able to achieve enlightenment. Both hands are held near the chest, (signifying that the teaching is given straight from the heart) forming a circle with the index and thumb of both hands. The palm of the right hand is turned out whereas the palm of the left is turned in. The circle represents the wheel of Dharma "Dharma chakra", where Dharma means righteousness and chakra means the universe. Dharmachakra teaching mudra statue is beneficial for people desiring academic success and spiritual growth in their life. The teaching Buddha statue is a reflection of pure wisdom and intellectual and fulfilling destiny. **Placement:** In your living, office, study, make sure to face him the east. Northeast and southwest are considered the favorable ones. **Care:** extremely easy to clean. Dusting the surface using a cloth or broom, will ward off the dust from accumulating.



Large Buddha Head Statue Sandstone 3 feet

[Read More](#)

SKU: 01025

Price: ₹100,000.00 inc. GST

Stock: instock

Categories: [Buddha Head Statues](#), [Buddha Statues](#), [Garden Buddha Statue](#), [Statues & Sculptures](#)

Product Description

Large Buddha Head Statue Sandstone 3 feet, An alternative to traditional posture. A distressed finish holds a sense of generosity and compassion. **Material:** Sandstone/Redstone/Khondalite Stone **Dimension(HWL):** 34 x 19 x 18 inch **Height:** 3 feet (approx.) Buddha the name means "the awakened one". The founder of Buddhism. Born and named, Sidhartha (one who attains goal). The prince of the Shakya tribe. Away from the harsh reality of worldly sorrow, he was raised and brought up with all wealth and opulence. married and had a son. Until the age of twenty-nine, an incident changed his life. One day on his way to Kapila Vastu he saw an old person, a sick man, and a corpse. It makes him unsettle of the harsh truth, that every human on earth is subject to the fate of getting old, sick, and dead, and no opulence or pleasure will protect him from getting the dukkha. He also saw a monk who is walking with peace and serenity on his face. All these made him down the material pleasure of the royal life and he went on the spiritual quest. For the next six years, he follows many tea Heightchers' instructions, yogi practices, got into self-mortification, self-deprivation but did not find any specific solution to his quest. That is when he decided to find a middle path instead of going any extreme. He finally sat under a fig tree in deep meditation and attain enlightenment. From then he is known as Lord Buddha. He spent all his life teaching others. He spent forty-five years teaching others by traveling from place to place. and took his last breath at Kushinagar. Buddhas statue always has different postures, hand gestures which have many spiritual meanings but the head is always the same. Buddha head holds the secret of enlightenment, knowledge, and wisdom. The head always demonstrates placidity and poise. In his prince hood,

he used to the topknot. He shaved his hair off for the spiritual quest. A shaved head is a symbol of getting rid of illusion and ignorance. But his head is always portrayed with ringlet curls. Those ringlets are not short hair but the 108 died snails. In his meditation days, Lord Buddha was in deep meditation even after he was under the tree the rays of the sun was directed towards his bald head, at that very moment, a snail was making his way around seeing Buddhas states and realized that this will make him distracted and lose focus on his concentration due to the sun rays, the way up to his head and sat there. Other snails were also the first one and end of the day when Buddha stood from the meditation he realized he was caped of 108 snails, who had given their lives to make a safe focus free environment so that Buddha reach the path to enlightenment. So they are always displayed in his head to remind us about their sacrifice. His elongated ears remind us that once he was a prince who wears heavy jewelry but gave up all on divinity and mankind. His smiling lips depict despite all suffering, he has higher wisdom and understanding of the universe. The circular dot on his forehead resembles the third eye, he can see beyond the physical and materialistic arena. Keeping a Buddha head big size in the space evokes peaceful and harmonious energy in the atmosphere. It amplifies the calmness within us.

Placement: Keep Large Buddha Head Statue in garden to achieve success. **Care:** Use a cotton cloth or a broom for the dusting



Stone Buddha Head Statue 2.5 feet

[Read More](#)

SKU: 01024

Price: ₹72,000.00 inc. GST

Stock: instock

Categories: [Buddha Head Statues](#), [Buddha Statues](#), [Garden Buddha Statue](#), [Statues & Sculptures](#)

Product Description

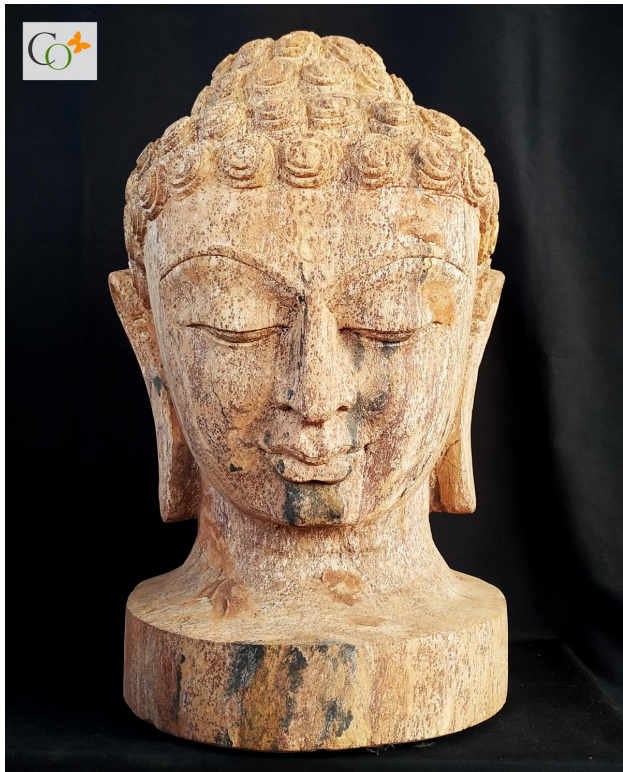
Sand stone Buddha Head Statue 2.5 feet, A lighthearted interior theme, with a rugged finish making it look like standing for ages. Decorate your space with a unique piece of the Buddha

head with a serene expression and appealing elegance.

Material: Sandstone / Redstone / Khondalite Stone **Dimension(HWL):** 28 x 16 x 16 inch

Height: 2.5 feet

There was a prince named Siddhartha Gautama. Brought up and raised in wealth and luxuriousness. Shove off from the luxury life after encountering the suffering of the world at the age of twenty-nine only. undergo many extremes and finally determined to find a middle path six years later which appears to be his all answer to the suffering by meditating under the bodhi tree. The person is known to be "Buddha" which means the awakened one. Which he later share with the world, how to escape from suffering and the path to achieve it, he spent his entire life teaching others. Lord Buddha's life has been showcased through many postures and gestures him from meditating, sitting, standing to reclining, each posture has some significance with his life except the head, which remains the same in all of his distinct physical features. That curly hair on his head was not hair, Lord Buddha has shoved his head when he left his palace, during his meditation time he was meditating under a tree, a snail which was passing by saw that the sun rays directed towards Buddha's bald skin which may distract him from achieving his goal, tom which the snail went up to his head so he can provide lubrication from his damp body to protects Lord Buddha's skin, seeing this many other snails also followed him to the head. When Lord Buddha stood up after his meditation he find out 108 snails covered up his head, and succumbed to death due to the hot rays dehydrated and dried only to save him from the rays. So the head of Buddha always seen the snails covering in his head to remind the sacrifice of those 108 martyrs who helped him to achieve the path of enlightenment. The top nut bump on his head represents the intelligence and polymath he gained after enlightenment. The dot on his forehead widely known as the third eye, makes him see beyond the worldly and physical world. His protracted ear lob symbolizes the state that he can hear the suffering of the world. His half-closed eyes depict his deep contemplative state yet see through the awakened third eye. The smirk smile on his face illustrates his understanding of the universe despite the suffering. The presence of the Lord Buddha head statue benefits us in many ways, it improves mental well-being, strengthens the calmer side of one's inner self, and develops a strong vibe of peace around the surrounding. Keeping a Buddha head at study and kids room will rip the success benefit of an academic purpose. And keep in mind always face him to the east where ever you purpose to place him. **Placement:** Not only spiritual benefits it can be proved to be a magnificent home decor piece to add ornamentation to the decor. Place a head statue if you have a tiny balcony garden, you can put him among the flower pots. Otherwise many other options like statue him in Console table with few figurines, and on the sideboard between two lamps of the same design will amplify beauty to your decor. Also, it can be proved to be a divine gifting option for your loved ones. **Care:** Sand stone Buddha Head Statue can be easily clean with fiber cloth or with a broom, whenever required to get rid of dust.



Sand Stone Buddha Head Statue 18 in

[Read More](#)

SKU: 01022

Price: ₹27,000.00 inc. GST

Stock: instock

Categories: [Buddha Head Statues](#), [Buddha Statues](#), [Garden Buddha Statue](#), [Statues & Sculptures](#)

Product Description

Sand Stone Buddha Head Statue 18 in. A beautiful distressed statue head finish has many placement possibility through out your home or office. This piece has ability to capture the the mind with placidity with a single glance.

Material: Sandstone / Khondalite Stone **Dimension(HWL):** 18 x 12 x 12 inch **Height:** 1.5 ft
 Lord Gautama Buddha, the pioneer of Buddhism. Teaches the world how to escape the suffering of the world. Lord Buddha's head illustrates his aspects of life with many significance. His head looks covered with curly hair, actually was not the hair, it's the hundred eight snails. During the time he left his palace he shaved his head when he was sat under the Bodhi tree and started to meditate, the sun rays were directed towards his head, a snail passing by noticed this, and realized that the hot rays soon will distract him and lose his concentration so he went up to his head and sat there, seeing this others snails also followed him and all of them sat there to provide cooling his bare head skin with their lubricated body. Later in the evening when Lord Buddha was standing from his meditation, he noticed 108 snails on his head who gave up his life to achieve his enlightenment without distraction. That's why we always displays the head with snails reminding of their sacrifice. His semi closed eyes illustrates his awoken of inner as well as outer world. His long ear lobes represent his ability to hear the suffering of the world, his dot of forehead illustrates third eye of wholeness. His smirk smile depicts the understanding of the real universe in spite of the suffering. His life long teaching was based on finding out the sorrow or suffering and the way to escape it. His teaching include four noble path, the middle path between the extreme. and eighth fold path. Create a tranquil and serene energy in your

home or office with the Buddha head statue. In today's life full of hectic, the statue bring placid and balanced energy with our inner self. A must have piece to add in your space. **Placement:** Make a space among your tiny garden of your balcony for the Buddha head statue. You can place on the console or side board with few more figurines or between lamps. Consider it on the shelf and in corridor upon a table. A perfect gifting option for your dear ones. **Care:** Dust the surface with a cloth or broom periodically to ward off dust.



Pink Stone Teaching Buddha Sculpture 12 inch 3

[Read More](#)

SKU: 00133

Price: ₹25,000.00 inc. GST

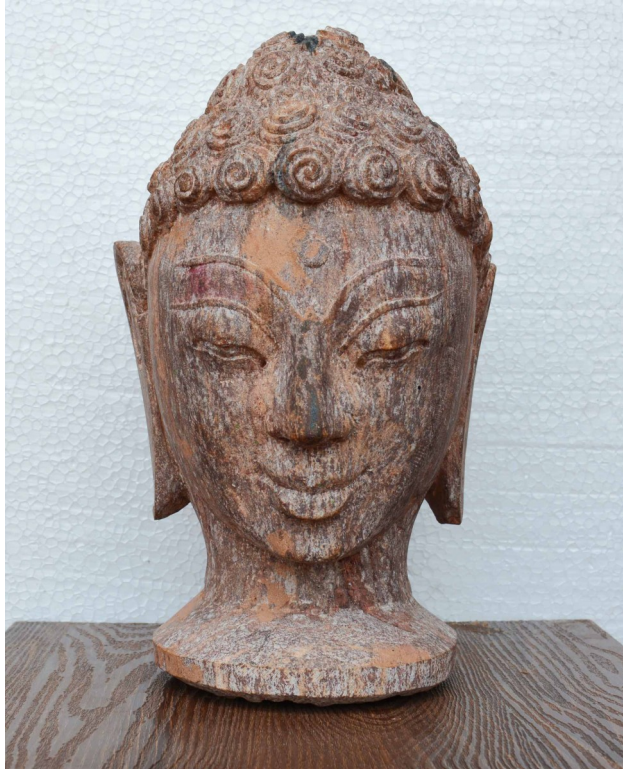
Stock: instock

Categories: [Sitting Buddha Statues](#), [Buddha Statues](#), [Statues & Sculptures](#), [Stone](#)

Product Description

Pink Stone Teaching Buddha Sculpture 12 inch, is an elegant sculpture with beautiful handling with age. A true statement piece to fit in your interior decoration. **Material:** Soapstone / Pink stone **Dimension(HWL):** 12 x 7 x 3.5 inch **Height:** 1 ft (approx.) **Position:** Sitting **Weight:** 10 kg Siddhartha Gautama son of the king of the Shakya tribe, lived a prosperous life until the age of 29. married and father of a son. His perception of life got changed when he run into an old fellow, a sick, a dead man, and an ascetic. Gautama realized the aspects of life that no wealth could prevent him from suffering. That is when he relinquishes the royal life and left in search of illumination. Which he found under a Bodhi tree near Bodh Gaya, at 35 through deep meditation and concentration. Spent the rest of his life, teaching others about the founding and path to attain it. Teaching Buddha is widely known as Dharma chakra Buddha, where Dharma stands for "Righteousness" and chakra means the "universe" denotes the universal righteousness order. The teaching Buddha mudra has nonverbal gestural communication. The Buddha is seen sitting on a lotus pedestal, the lotus represents the hardship and how to grow

from a dirty environment. Conveying a message that humans too have the potential to overcome suffering and able to achieve enlightenment. His right hand is held near the chest, palm outward denoting his teachings coming right from the heart, forming a circle with the index and thumb representing the wheel of dharma. Left hand resting on the lap, palm upward also forming the same circle with the fingers. The Teaching Buddha above is the most important moment, of his life when he first gave his sermon to his disciples. His first sermon was about the four noble truths and the eightfold path. Dharma chakra Buddha engenders growth and awakening into life. The Buddha is beneficial for achieving academic success and people desiring spiritual growth in his life. **Placement:** Rooms such as study, office, library, prayer can be suitable options to place the Buddha statue. The northeast corner is most favorable while placing, consider to face him east always. **Care:** Soapstone is a nonporous stone, so cleaning is extremely easy. Take a cotton cloth or a broom a gently wipe down the surface, enough to get rid of the dust.



Sand Stone Budha Head Statue 13inch 7

[Read More](#)

SKU: 00100

Price: ₹12,000.00 inc. GST

Stock: instock

Categories: [Buddha Head Statues](#), [Buddha Statues](#), [Statues & Sculptures](#), [Stone](#)

Product Description

Sand Stone Budha Head Statue 13 inch. The weather effect statue head resembles as it stood for years. Not only does it hold a sense of generosity and placid but also added stability to the decor.

Material: Sandstone / Khondalite Stone **Dimension(HWL):** 13 x 8 x 8 inch **Height:** 1 ft (approx.)

Gautama Buddha, widely known as "Shakyamuni", is the sage of the Shakya clan. The cycle of the renaissance is called Samsara which is the bailiwick of suffering. The buddhas ultimate enlightenment is the practice of sidestepping from that suffering. The person who discovered the path to free rein from suffering followed it to the end, and teaches it to others is called "The Buddha". Like every physical feature of Lord Buddha with some spiritual significance, his head also illustrates many aspects of his life. The top nut of his head is known as Ushnisha, which depicts his wisdom and acuity after enlightenment. His half-closed eyes looking the internal self as well as the external world. The lengthened ear illustrates the wealthy lifestyle from his past he pursued and his hearing power of suffering of the world. A dot on his forehead represents the third eye, the occult. His semi-closed eyes, with deep meditative state along with looking the material and physical world. The smirk smile on his face depicts in spite of all suffering, he has unfolded the understanding of the universe. Having a Buddha's head, Emits the power of wisdom and peace around it. Placing it facing east in study or kids will rip academic success.

Placement: You can place the delightful bust statue at the tiny garden of your balcony, on top of a console table or sideboard between two lamps, or place it with a few more decorative statues, on the shelf of your living room. Considered to be a gifting item full of divinity. **Care:** Sandstone material require very little care. Wipe down the surface with a fiber cloth or tea towel enough to ward off the dust.



Sand Stone Statue Budha Head 12inch 5

[Read More](#)

SKU: 00098

Price: ₹12,000.00 inc. GST

Stock: instock

Categories: [Buddha Head Statues](#), [Buddha Statues](#), [Stone](#)

Product Description

If are you thinking about investing in a collective and attractive beautiful handmade sand Stone statue of Buddha's head, then you are on the right page. we've collected attractive and timeless traditional picks for every style.

Material: Soapstone Pinkstone

Dimension(HWL): 5.5 x 3.2 x 3 inch

Height: 5.5 inch

Weight: 6 kg

Characteristics of the Buddha head sculpture:

- His head was caped of 108 snails, who had surrendered their lives to make a safe focus free environment so that Buddha gets the way to enlightenment.
- His long ears remind us that once he was a prince who wears heavy jewelry but gave up all on divinity and mankind.
- His smiling lips show that despite all suffering, he has higher wisdom and understanding of the universe.
- The circular dot on his forehead resembles the third eye, he can see outside the physical and materialistic arena.

An insight into the life of Gautama Buddha:

- "Buddha" word means "the awakened one".
- An iconic figurine of Sakyamuni Buddha is adequate to perceive the majesty of this historical leader who influenced the social and political frame of India.
- Gautama was born in a Kshatriya clan, the son of Suddhodana, elected chief of the Shakya clan, whose capital was Kapilavastu. His mother's name was Maya.
- King Suddhodana, wishing for his son to be a great king, protected him from any contact with human suffering, as well as, religious education.
- He was grown and brought up with all prosperity and luxury.
- It was after spending 29 years as the prince of Kapilavastu, that Siddharth eventually got a peek at the outside real world. Gautama Buddha noticed three things- an old man, a dead body, and a sick man.
- It makes him upset by the harsh truth, that every human on earth is subject to the suffering of getting old, sick, and dead, and no luxury or pleasure will protect him from getting the Dukha/suffering.
- He also saw a monk who is roaming with peace and calmness on his face, these three sights made him understand how life is full of suffering and how it is just a temporary

phase. Post his meeting with the outside world, he decided to leave the royal duties and family to attain enlightenment. And traveled into the forest, and spent six long years studying ideologies and undergoing yogic asceticisms.

- He spent seven weeks in the shade of a Bodhi tree until he attained Nirvana. Then he sermonized sermons and embarked on missionary travels for 45 years and later left the world at the age of 80.

Authentic decor tips for the Buddha head statue:

- Exhibiting it on vacant corners is perfect that work as a rich and elegant addition to your home decor.
- You can put the head on a pedestal in the living room, beside the couch.
- Use it to create diversity by combining two matching colors or play with degradés of your favorite color.
- Replace harsh florescent lights with calming, nature-inspired, or candle lights near the head for making a soothing atmosphere.
- Water is a nice feature of the décor, use the pool, koi pond, or fountain near the statue head.
- Ornate the empty nooks of your home and patio.
- Plants have a calming effect through their soothing green colors then why don't you go for placing it near the potted plants of your balcony garden?
- A bonsai tree or a lamp can well complement the Buddha's head over a sideboard or console.

Godsends of keeping the Buddha's head:

- The face transmits tranquility and peace all around its surrounding.
- The idol of Buddha emits an aura of peace and calmness and also makes a great decorative item.
- It provides buoyant and soothing energy to help you concentrate better. You can put it in the corner facing East, as it represents eternal wisdom and enlightenment. This will help you attain harmony.

How to clean and keep the head statue:

- The effortless cleaning makes the Sandstone unique.
- An uncomplicated cleaning process on intervals will last for ages.
- Wipe off the dust and debris from the sculpture by using a microfiber wetness cloth over the surface.
- Wipe the surface with gentle strokes is enough to get rid of uninvited dust.



Sand Stone Sculpture Budha Head 1ft 4

[Read More](#)

SKU: 00097

Price: ₹12,000.00 inc. GST

Stock: instock

Categories: [Buddha Head Statues](#), [Buddha Statues](#), [Statues & Sculptures](#), [Stone](#)

Product Description

Buddha statues represent the life and teachings of everyday life. Each one imparts a different message. Even the most minimalistic statue can be filled with boundless meaning like this Budha head sculpture.

Material: Sandstone / Redstone

Dimension(HWL): 12 x 7.5 x 7 inch

Height: 1 ft

Features of the Buddha head sculpture:

- He was caped of 108 snails, who had given their lives to make a safe focus free environment so that Buddha reach the path to enlightenment.
- His elongated ears remind us that once he was a prince who wears heavy jewelry but gave up all on divinity and mankind.
- His smiling lips depict that despite all suffering, he has higher wisdom and understanding of the universe.
- The circular dot on his forehead resembles the third eye, he can see beyond the physical and materialistic arena.

Gautama Buddha:

- Buddha the name means "the awakened one".
- The founder of Buddhism. Born and named, Sidhartha, the prince of the Shakya tribe.
- He was raised and brought up with all wealth and opulence.
- At the age of twenty-nine, an incident changed his life. One day on his way to Kapila Vastu he saw an old person, a sick man, and a corpse.
- It makes him disturb by the harsh truth, that every human on earth is subject to the destiny of getting old, sick, and dead, and no luxury or pleasure will protect him from getting the dukkha.
- He also saw a monk who is walking with peace and serenity on his face. All these made him down the material bliss of the royal life and he went on a spiritual search of finding the solution to the sorrow.

Spread the aura of decorative peace:

- Display this decoration in any room where blue, green, or gold is welcome, and you will have an instant reminder to achieve balance with nature.
- For a maximalist effect, pair it with colorful decor like crystals. To use as the focal point, display with decor dominated by neutrals.
- A statue that represents spiritual awakening is a great addition to any space that follows the principles laid out by feng shui. Place it next to your home's entrance to bring mindfulness wherever your life takes you. When located next to a plant as seen in this example, the statuette could represent the balance found in nature.
- The distressed finished finish gives this resin sculpture timeless integrity that can grace a wide variety of home decor styles.
- It is the perfect size to meditate on your desk at work.
- This small concrete statue is the perfect size to add international sophistication and joyful tranquility to the plants in your life. In this dream-like position, this statue will add a sense of calming whimsy to any decor.
- this statue will look fantastic with silk plants as well. For a zen like ambiance, pair with a bonsai or even polished stones.

Some advantages of keeping the Buddha's head:

- One of the major reasons is that these idols are said to radiate the energy of peace and calmness around you.
- Buddha idols do not possess just religious significance. They radiate an aura of peace and calmness and also make a great decorative item.

- Something in your house that spreads positivity while also adding to the beauty of your place.

Cleaning and maintaining the head statue:

- As one of the most recognizable stones on earth, appealing to the eye as the classic look of sandstone.
- Whether being used in the garden sculpture, sandstone is bound to add an instant touch of class to any area in or around your property and is relatively easy to take care of.
- Simply just by treating them to a simple clean regularly.
- Dust particles and dirt lift away from them with a broom, then mop or gently or use a damp quality cloth to give them a good scrub.



Sand Stone Sculpture Budha Head 10inch 3

[Read More](#)

SKU: 00096

Price: ₹9,000.00 inc. GST

Stock: instock

Categories: [Buddha Head Statues](#), [Buddha Statues](#), [Statues & Sculptures](#), [Stone](#)

Product Description

Sand Stone Sculpture of Budha Head is made by the sculptor of CRAFTS ODISHA by making each piece perfect. Carved in such a way that looks great when displayed apart or when grouped together.

Material: Sandstone Redstone

Dimension (HWL): 10 x 7 x7 inch

Height: 10 inch

Explanation of the garden statue:

- The sculpture here represents the statue of the head of Lord Buddha. represent Buddha's spiritual enlightenment.
- The expression of the face represented in Buddha head statues is one of peace, serenity, self-possession, and composure.
- The statue is aesthetically pleasing and meaningful as well.

About Buddha:

- Widely known as SHAKYAMUNI. Buddha stands for "the awakened one".
- His heads have countless meanings behind every part.
- His head symbolizes wisdom and the route to enlightenment.
- The extended-shaped ear signifies the early life of the prince he lived and also his divine power to hear his disciples.
- His closed eyes demonstrate deep meditation.
- The dot on his forehead illustrates the third eye.
- Having a greater understanding of the universe can be seen through his titter smile.

Placement tips for the sacred head:

- Make a miniature landscape using sand rocks gravel, a few shrubs, and trees where you can incorporate the head.
- you can place them indoors like on your balcony or porch, or patio near any plotted plants.
- Some carefully cultivated smallish trees look wise beyond their years which will go hand in hand with the head statue. (You can choose from; Chinese Juniper Japanese Needle Juniper, California Juniper, Rocky Mountain Juniper, Sierra Juniper, Apple Bonsai, Azalea Bonsai, BougainvilleaHibiscus Bonsai).
- Place it above a side table or console in the foyer, corridor, or hallway for a lasting impression on the onlooker.
- You can go for a plinth to place the head statue in the living, lobby, or corridor.

Usefulness:

- To achieve triumph in academics, you should place the Buddha head statue at the kid's corner facing east.
- The head symbolizes self-knowledge, so you will gain tremendous knowledge and wisdom.

- It can energize all the sectors of your life positively.

The proper way to clean your Buddha head statue:

- Use a soft cloth to wipe away dirt and other debris from the statue.
- Dust the sculpture regularly at least once a week. Too much dust can damage the surface. Use a soft, clean, dry cloth and dust the sculpture thoroughly.



Buddha Statue for Home Vastu Sandstone

[Read More](#)

SKU: 01776

Price: ₹70,000.00 inc. GST

Stock: onbackorder

Categories: [Buddha Statues](#), [Garden Buddha Statue](#), [Sitting Buddha Statues](#), [Statues & Sculptures](#)

Product Description

Buddha Statue for Home Vastu balances beauty and functionality with pure grace. This beautiful piece delivers an updated take on a true classic.

Material: Sandstone Redstone statue

Dimension(HWL): 36 x 20 x 10 inch

Position: Sitting

Height: 3 ft

Characteristics of the Buddha Statue for Home:

- A fine sculpture of Protection/Blessing Buddha is displayed above.

- The statue seen in rich white sits over a fully bloomed lotus pedestal.
- As shown above, his right hand is raised and facing outward symbolically portraying a guard.
- While the left one extended towards the palm up in the lap which means courage and offers safeness.

About the blessing Buddha:

- Siddhartha Gautama is "Buddha" which stands for the "Awakened One".
- Born as a monarchial Prince whose father had protected him against any kind of distress. From the time of his birth until the age of 29, he was provided everything that one could crave, looks and wealth, a beautiful wife, and a healthy son.
- He encountered sickness, old age, and death for the first time when he reached the age of 29. Shattered by what he saw Goutama learned that all beings were subject to these things, no matter how much they had of material goods and grandeur. He could no longer ignore the fact of life.
- So, he left his home forever and took up the begging bowl and staff of the Samana to seek the end of his samsara, the constant cycle of births, deaths, and rebirths.
- Gautama sat under a huge tree that was later called the "wisdom," or "Bodhi" tree, and asserted not to leave it until he achieved the liberating understanding he sought.
- He undertook a long and challenging period of meditation that lead up to his gaining deep insights into a human necessity. Ultimately, in overpowering the tricks of the demonic Mara, he attains Nibbana (or nirvana).

Tips for creating a place for the Buddha statue:

- If there is a pond, pool, or water fountain in your garden plant the Buddha statue there to create the ultimate Zen ambiance.
- Pruned evergreens are great but little hills with groundcover plants are more creative if you place your statue there.
- Create natural-looking paths in your garden to lead it to the statue where you placed it.
- If you have a moist, shady area in your garden where isn't any foot traffic, grow moss there. It's a beautiful statue placement idea for a zen look.
- You need a lot of small stones or sand to design dry landscapes where you can exhibit your statue.
- Adding stones and pebbles in different sizes is a great way to surround your Buddha statue.

- Using subtle color contrast and bold textural differences can create the interest necessary in a minimalist garden to exhibit your statue.
- Stone lanterns shaped as pagodas are quite popular features of zen gardens, If you have one of them create a zen feel near the statue.
- Adorn your statue with evergreen plants as they usually come in different sizes with different shapes carefully mixed together.

Cleaning tips for Buddha Statue for Home Vastu :

- Start the cleaning by dampening it using a hose spray. Once it got soaked, rinse it thoroughly with a cloth or sponge.
- Let it air dry after giving a final bath.



Small Sitting Namaste Buddha Idol in Pink Soft Stone 4 inch

[Read More](#)

SKU: 01415

Price: ₹4,000.00 inc. GST

Stock: onbackorder

Categories: [Sitting Buddha Statues](#), [Buddha Statues](#), [Statues & Sculptures](#)

Tags: [buddha statue](#), [Lord Buddha Idols](#), [Meditating Buddha Sculpture](#), [Meditation Buddha Statue](#), [Sitting Lord Buddha Statue](#), [Soapstone buddha statue](#), [stone buddha statue](#)

Product Description

Small Sitting Namaste Buddha Idol in Pink Soft Stone 4 inch. A simple alternative to Buddha's other traditional postures. Wide-reaching positive impact where ever you place it.

Material: Soapstone/Pinkstone Dimension(HWL): 4 x 2.5 x 1.5 Position: Sitting Buddha means "the awaken one" here awaken means the awakened mind, there are seven qualities that led us to an awakened mind, these are mindfulness, investigation, energy, joy, tranquility, concentration, equanimity. With these qualities, we can see things as they are and not what we imagine them to be. Lord Buddha was born as a prince of the Shakya tribe, named Siddhartha

Gautama. Raised and brought up with all opulence and luxury in his palace one can fantasy over, unaware of misery, sorrow, and suffering of human faces in the outside world. Married and had a son. One day Gautama ventured out of his palace, he saw three definite aspects of life each for the first time, he saw an old man, a sick man, a corpse. This scene shook him to the core, he perceived that these are inevitable fates of humans, no one can avoid. And then he saw a holy monk walking with peace and serenity in his face All these made him find a way to overcome the universal suffering. He decamps his spiritual quest by leaving the lavish life behind. For six long years, he followed many ascetic, extreme self-denial, self-deprivation, and self-mortification, even if following the extreme asceticism he couldn't find the answer to his quest. So he abandoned the extremes life nor return to the luxury life instead and discover the middle way, (like neither luxury nor poverty). He sat beneath a Bodhi tree, in deep meditation, and finally achieved enlightenment. The Namaste Buddha/Anjali Buddha widely known as praying Buddha is seen sitting on a lotus pedestal in a double lotus pose known as the Vajrasan pose. The Anjali mudra is expressed with both hands joining together near the chest by pressing the palms of the hands together. The two hands symbolize two inseparable forms of existence, spiritual and material. When it performs near the heart it represents the purity of mind body and speech. With the gesture of namaste Buddha, one can connect to deep peace and serenity. A powerful decor as well as a gift option for your dear ones. **Placement:** It is recommended to place the Anjali mudra statue at the main entrance, living room, or any other place to welcome positive energy. Also ideal for puja room and altar. **Care:** The nonporous material doesn't need much care, gently wiping the surface with a cloth is enough to keep the beauty of the statue.



Pink Soap Stone Earth Touching Buddha Idol 4 inch

[Read More](#)

SKU: 01412

Price: ₹4,000.00 inc. GST

Stock: onbackorder

Categories: [Buddha Statues](#), [Sitting Buddha Statues](#), [Statues & Sculptures](#)

Tags: [buddha statue](#), [Lord Buddha Idols](#), [Meditating Buddha Sculpture](#), [Meditation Buddha Statue](#), [Sitting Buddha Statue](#), [Sitting Lord Buddha Statue](#), [Soapstone buddha statue](#)

Product Description
