



Dual Body Single Face Dopichha Lion for Temple Garden Decor

[Read More](#)

SKU: 01510

Price: Call for price

Stock: instock

Categories: [Lion Statues](#), [Animals & Birds Statues](#), [Garden Sculptures](#), [Hindu Statues](#), [Statues & Sculptures](#)

Tags: [Animal Statue for Garden](#), [Animal Statue for Home](#), [Do picha Singha Murti for Mandir](#), [Dopicha Lion Statue for Temple](#), [garden decor](#), [Garden Stone Statue](#), [home décor](#), [Lion Sculpture](#), [lion statue for temple](#), [Outdoor Stone Statue](#), [Statue for Home](#)

Product Description

Admire this unique statue of single-faced dual body lion, the king of the jungle will lend a crowning touch to any outdoor decoration. The intriguing stone carving unearths the mythical beast. **Material:** Sandstone / Red stone **Dimension(HWL):** 12 x 15 x 15 inch **Width:** 15 inch **Position:** Sitting

The lineament of the quirky sculpture:

- The dual body beast is sitting on a flat pedestal with a fierce look.
- The uniqueness has been seen from the single face over the dual body of the sculpture.
- This artisanal majestic statue has been carved by the skillful craftsman of Odisha.
- With the stone and chisel, the artisans have given brilliant expression and features to the sculpture, enough to make you speechless.

The mythological belief of lions in Hindu:

- The lion has served as a Vahana to many Hindu deities like Goddess Durga, Goddess Parvati, Goddess Narasimhi, Goddess Katyayini, Goddess Skandamata, etc.
- In Buddhist culture, statues of lions are said to bring peace and prosperity.
- Lord Vishnu took half lion half man form in his Narasimha Avatara.

- The lion symbolizes pride that's why it is sat on each side at the entrance of many Hindu temples It is believed that they protect and guard the temple.

Tip-off some ideas to place the sui generis stone sculpture:

- You can place it at the entrance of any holy temple or atop of the temple.
- It also represents energy and happiness. So placing it in front of the home or the office is also beneficial.
- You can choose to flank any entryway of the garden, lawn, and zoo with a unique piece.
- You can place two same pairs of lions on each side of the entryway of the home, garden, or any desired area of your choice. This shows power, strength, and wisdom.
- You can place it in the landscaping design, besides the fountain, swimming pool, or can place it above any pillared structure center decoration.

Care and maintenance instruction for the decorative stone:

- Sandstone is a material that can stand in any weather. It is popular for its durability.
- Give a bathe to the sculpture in running water, or you can simply wipe the statue with a cloth or broom to get rid of dust.
- This should be done every other day.



Odisha Sandstone Nandi Bull Statue for Temple and Garden Decor

[Read More](#)

SKU: 01504

Price: Call for price

Stock: instock

Categories: [Animals & Birds Statues](#), [Garden Sculptures](#), [Hindu Statues](#), [Statues & Sculptures](#)

Tags: [Animal Statue for Garden](#), [Animal Statue for Home](#), [garden decor](#), [Garden Stone Statue](#), [home décor](#), [Nandi Sculpture for Temple](#), [Nandi Statue for Puja](#), [Nandi Stone Idol](#), [Outdoor Stone Statue](#), [Shiv Ji Nandi Statue](#), [Statue for Home](#)

Product Description




CRAFTS ODISHA

Lord Jagannath Jaga Kalia Jius Shola Work in Frame

[Read More](#)

SKU: 01478

Price: Call for price

Stock: instock

Categories: [Hindu Statues](#), [Jagannath Idol](#), [Statues & Sculptures](#)

Tags: [jagannath baladev subhadra statue](#), [jagannath idols](#), [jagannath Moorti](#), [jagannath Murti](#), [jagannath Statue for Home](#), [Puri Jagannath Dham Statue](#), [Sholapith Sculpture](#)

Product Description

Add a cherry on top of your decor theme with this Lord Jagannath Shola Work In Frame, a perfect addition to style without sacrificing functionality.

Material: Sholapith wood

Dimension(HWL): 12 x 4 x 6 inch

Position: Sitting Statue

Frame: With frame

The enticing framed trinity:

- The idol above depicts the holy triplicity of Lord Jagannath, Balabhadra, and Subhadra.
- The statue of Lord Jagannath, Balabhadra, and Subhadra is made from Sholapith, with delicate ornamentation.
- The trio is sitting on a Simhasan with their precious weapon and objects.
- The alluring frame is made by the efficient artificer of Odisha.

Some facts about the trinity:

- Lord Jagannath worshipped along with his brother Lord Balabhadra, and his sister Goddess Subhadra.
- Lord Jagannath is regarded as the incarnations of Lord Vishnu.
- Jaga means world and Nath means Lord, so, he is the lord of the world.
- Likewise, Bala means strength so as does the Balaram, he is the epitome of strength. He is considered the human Avatar of Seshnag and the numen of agriculture.
- Unlike other gods and goddesses who get idolized as husband and wife form, in Puri, the sibling gets worshipped in the shrine symbolizing the purest form of relationship.

Placement ideas and direction of the striking home statue décor:

- Placing it in the north or northeast corner while facing it in the east direction will be auspicious.
- You can use it in your temple of home and office for worship.
- The engaging home statue décor can be placed on the sideboard, console, or on the shelf of your living room, office, hotel, institution, etc.
- A winsome present to gift your dear one at their special events.

Benefits of keeping the holy trinity :

- It is believed that worshipping the Lord with a pure heart reward the devotee by fulfilling all his wishes.
- Obstacle coming into life is easily removed by keeping the idol at your home and office.
- Relishing the gaze of the Lord blesses them with a blissful life.

Guide for cleaning and maintaining :

- The charming decor piece is made of Sholapith.
 - Sholapith is considered to be very lightweight, and water-resistant.
 - For cleaning, take a piece of cloth and wipe the surface of the frame.
 - The dusting should be carried periodically, to keep the dust away from the surface of the home statue decor.
-



Lord Jagannath Jaga Kalia Jius Shola Work in Frame



[Read More](#)

SKU: 01477

Price: Call for price

Stock: instock

Categories: [Hindu Statues](#), [Jagannath Idol](#), [Statues & Sculptures](#)

Tags: [jagannath idols](#), [Jagannath Moorti](#), [Jagannath Statue for Home](#), [Lord Jagannath Statue](#), [Sholapith Sculpture](#)

Product Description

Looking for a more dramatic take on the traditional aesthetic statues, then CRAFTS ODISHA offers you the classic Lord Jagannath Shola work in a frame to display your decor theme. A charming for use anywhere throughout your home.

The fascinating framed of the trinity:

- The beauteous statue depicts the trinity of Lord Jagannath, Balabhadra, and Subhadra.
- The statue of Lord Jagannath, Balabhadra, and Subhadra is from Sholapith, with delicate ornamentation.
- The trio is sitting on a two-layer Simhasan with their precious weapon and objects.
- The mesmerizing frame is made by the efficient craftsman of Odisha.

Few facts about the triad:

- Lord Jagannath worshipped along with his brother Lord Balabhadra, and his sister Goddess Subhadra in his shrine.
- Lord Jagannath is considered to be one of the incarnations of Lord Vishnu.
- The word Jaga means universe and Nath means Lord, so, he is the lord of the universe.
- Likewise, Bala means strength so as does the Balaram, he is the epitome of strength. He is considered the human Avatar of Seshnag and the deity of agriculture.

- Unlike other gods and goddesses who get idolized as husband and wife form, in Puri, the sibling gets worshipped in the shrine symbolizing the purest form of relationship.

Placement ideas and direction of the beautiful home statue décor:

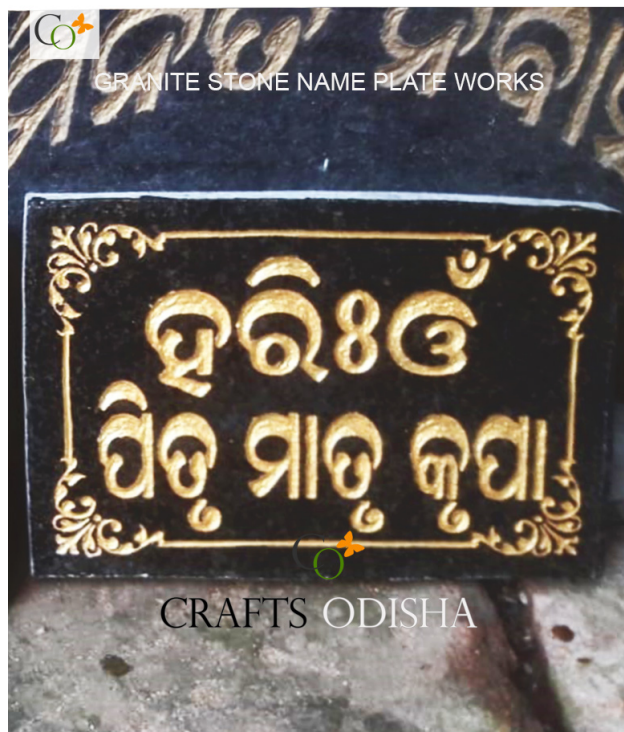
- Place the idol in the north or northeast corner while facing it in the east direction for auspicious results.
- You can use it in your temple of home and office for worship.
- The engaging home statue décor can be placed on the cabin, cupboard, and showcase in your living room and office.
- You can also place it on your study table, reception desk, coffee table, and office chamber.
- A lovely gifting option for your dear one at their special events.

Benefits of keeping the divine trinity :

- It is believed that worshipping the trio with a pure heart reward the devotee by fulfilling all his wishes.
- Any obstacle coming in life is easily removed by keeping the idol at your home and office.
- Relishing the gaze of the Lord blesses them with a blissful life.

Guide for cleaning :

- The lovely décor piece is made of Sholapith.
 - Sholapith is considered to be very lightweight, and water-resistant.
 - For cleaning, take a piece of cloth and wipe the surface of the frame.
 - The dusting should be carried periodically, to keep the dust away from the surface of the home statue décor.
-



Black Granite Stone Engraving Hari OM Name Plate for Home

[Read More](#)

SKU: 01476

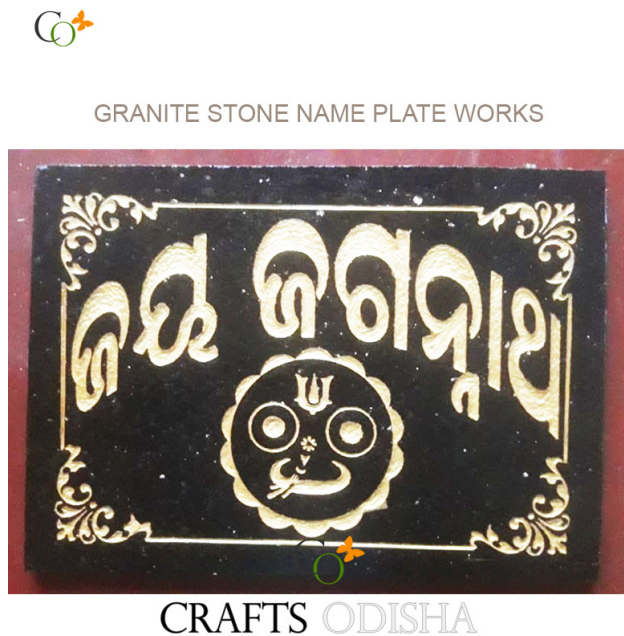
Price: Call for price

Stock: instock

Categories: [Hindu Statues](#), [Modern Sculptures](#), [Other God/Godess Statues](#), [Statues & Sculptures](#), [Stone Engraving / Name Plates](#)

Tags: [Name Plate for Home](#), [Stone Engraving Works](#), [Stone Name Plates](#), [wall decor](#), [Wall fixing](#)

Product Description



Black Granite Stone Engraving Jai Jagannath Name Plate for Home

[Read More](#)

SKU: 01475

Price: Call for price

Stock: instock

Categories: [Hindu Statues](#), [Modern Sculptures](#), [Other God/Godess Statues](#), [Statues & Sculptures](#), [Stone Engraving / Name Plates](#)

Tags: [Name Plate for Home](#), [Stone Engraving Works](#), [Stone Name Plates](#), [wall decor](#), [Wall fixing](#)

Product Description



GRANITE STONE NAME PLATE WORKS



CRAFTS ODISHA

Black Granite Stone Gowrisuta Engraving Name Plate for Home

[Read More](#)
SKU: 01474**Price:** Call for price**Stock:** instock

Categories: [Hindu Statues](#), [Modern Sculptures](#), [Other God/Godess Statues](#), [Statues & Sculptures](#), [Stone Engraving / Name Plates](#)

Tags: [Name Plate for Home](#), [Stone Engraving Works](#), [Stone Name Plates](#), [Wall fixing](#)

Product Description



CRAFTS ODISHA

Sandstone Bada Chaka Konark Wheel Sculpture 5 ft

[Read More](#)
SKU: 01468**Price:** Call for price**Stock:** instock

Categories: [Hindu Statues](#), [Modern Sculptures](#), [Other God/Godess Statues](#), [Statues & Sculptures](#)

Tags: [Garden Stone Statue](#), [Indoor Stone Statue](#), [konark temple](#), [Konark Wheels Sculpture for Home](#), [Outdoor Stone Statue](#), [Stone Statue for Hotel](#), [Stone Statue for Villa](#)

Product Description



Sandstone Konark Wheel Statue 4 ft

[Read More](#)

SKU: 01467

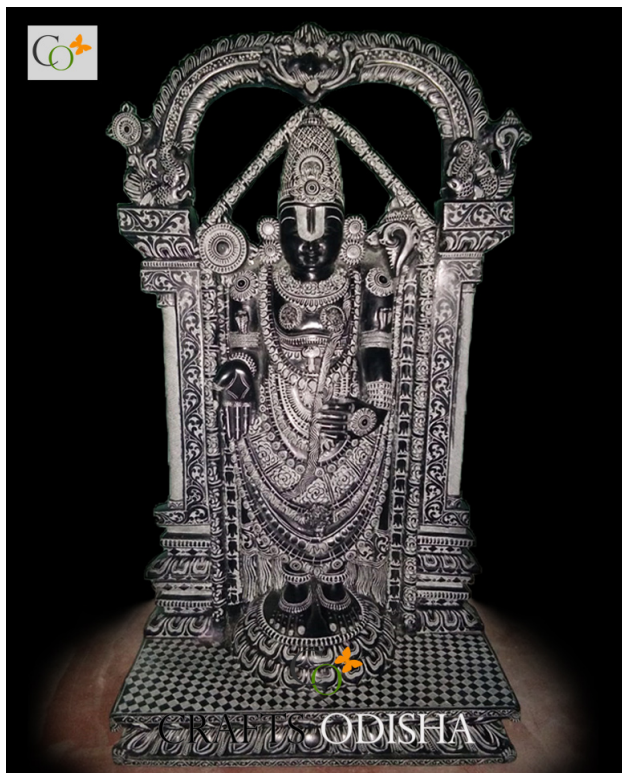
Price: Call for price

Stock: instock

Categories: [Hindu Statues](#), [Modern Sculptures](#), [Other God/Godess Statues](#), [Statues & Sculptures](#)

Tags: [Garden Stone Statue](#), [Indoor Stone Statue](#), [konark temple](#), [Konark Wheels Sculpture for Home](#), [Modern Sculpture](#), [Outdoor Stone Statue](#)

Product Description



Black Mahabalipuram Stone Balaji Statue 2 ft

[Read More](#)

SKU: 01459

Price: Call for price

Stock: instock

Categories: [Hindu Statues](#), [Statues & Sculptures](#), [Vishnu Statues](#)

Tags: [Balaji Stone Statue](#), [Black Stone Idol](#), [Garden Stone Statue](#), [Indoor Stone Statue](#), [Outdoor Stone Statue](#), [Statue for Temple](#), [Tirupati Balaji Stone Idol](#)

Product Description



Sandstone Simha Vahini Maa Durga Idol Sculpture 30 inch

[Read More](#)

SKU: 01454

Price: ₹45,000.00 inc. GST

Stock: instock

Categories: [Maa Durga Statue](#), [Hindu Statues](#), [Statues & Sculptures](#)

Tags: [Garden Stone Statue](#), [Maa Durga Idol](#), [Maa Durga Moorti](#), [Maa Durga Murti](#), [Maa Durga Statue for Home](#), [Maa Jagadambe Stone Statue](#), [Maa Sherawali Statue](#), [Outdoor Stone Staue](#), [Statue for Temple](#)

Product Description

A classic affair showcasing the talent of carvers, a great option for any space with a minimalistic look suitable for both indoor and outdoor. The glossy finish of the "Maa Durga idol" makes it an attractive accent piece. Material: Sandstone / Red stone
Dimension (HWL): 30 x 21 x 10 inch **Position:** Sitting **Height:** 2.5 ft (approx.) Let's unfold the glorifying image of the home garden statue:

- The above sculpture acclaims the image of Goddess Durga. The invincible Goddess.
- The statue depicted here is sitting on her fierce mount lion, with four arms carrying a thunderbolt and sword while gesturing in Varada and Abhaya mudra, beautifully wrapped in saree and bejeweled with ornaments.
- The whole graven image is supported with a pedestal of temple design, demonstrating the competent carving of artisans exclusively.

The symbol of Shakti; Maa Durga

- **"Du"** means difficult and **"Ga"** means to cross over, thus Durga means a fort difficult to cut across. It symbolizes protection.
- An asura named **Mahishashura**, procured the boon of unbeatable from Lord Bramha, that he will not be killed by any man, god, or animal.

- The unassailability made him so arrogant that he set out to conquer all three worlds. To which all Devatas solicit to the trinity to save them from his cruelty.
- This induces the emanation of Goddess **Durga**, who incarnate by embodying the collective energy of Lord Bramha, Vishnu, Mahesh, along with other gods.
- In a 10 day-long fight with the demon, she finally bumps off him with her trident, that day of her victory is celebrated as Vijaya Dashami.

Elevate your aesthetic with the following ideas:

- Following Vaastu, the Southeast is the appropriate zone to place the holy idol.
- You can display the sculpt using a pedestal stand to add charm to a well-manicured front lawn/yard/landscaping.
- The unused corner of an open hallway/gallery/foyer of office, home, or hotel will be an effective way to grab the attention of every passer-by.
- For puja in the temple of home or any shrine, the idol can be used.
- If you place the sculpt on the entryway of your institute/hotel/ factory, it will look stunning on its own.
- What is more auspicious than to gift a religious idol to your family and friends.

Lagniappe of keeping the revered statue of Maa Durga:

- Maa Durga blesses his devotee to overcome poverty, misery, and bad influences.
- Financial success, prosperity in both personal and professional life can be achieved with the grace of Goddess Durga.
- Get rid of planetary effects (bad) of your horoscope with her grace.

Follow the instruction manded below:

- Sandstone is a material that is resistant to all weather and is hard-wearing.
 - The process of cleaning begins with bathing the sculpt with a bucket of water, or you can make use of a hose spray, be gentle while spraying.
 - Once the statue douses, move with the second step by disengaging grime or any biological growth with a soft cloth or brush.
 - Once done with scrubbing now wipe the home garden statue with a kitchen towel or dry cloth.
-



Sandstone Standing Panchamukhi 5 faced Hanuman Statue 4 ft

[Read More](#)

SKU: 01451

Price: Call for price

Stock: instock

Categories: [Hanuman Statue](#), [Hindu Statues](#), [Statues & Sculptures](#)

Tags: [Anjaneya Stone Statue](#), [Anjaneya Swami Stone Idol](#), [Big Hanuman Statue](#), [Garden Stone Statue](#), [Hanuman Idol](#), [Outdoor Stone Statue](#), [Statue for Temple](#)

Product Description

A great choice for anyone looking to infuse an artistic taste into its decor combined with minimalistic style. The 5 faced Hanuman statue looks far more expensive than it is.

Material: Sandstone / Red stone **Dimension(HWL):** 48 x 30 x 14 inch **Position:** Standing
Height: 4 ft **Let's explicate the stone sculptures:**

- The towering statue is seen standing on a two-layer pedestal.
- The statue has five faces in all five directions with 10 hands endowed with many weapons like a battle-ax, disk, mace, trident, and sword.
- The enthralling form is made by the efficient artificer of Odisha where stone engraving is widely famous for its intricate design.

Hanuman: The mythological legend

- Believed to be the 11th incarnation of Lord Shiva.
- The five-faced Avatar of Lord Hanuman is those of a lion, eagle, horse, monkey, and Varaha.
- The meaning of the word "Hanuman" is "Disfigured jaw", (Hanu means jaw, and man means Disfigured).

- Lord Hanuman is the personification of supremely strong, immortal, and omnipresent.
- Hanuman Jayanti is celebrated every year on the full moon day of the Hindu month of Chaitra Purnima in several parts of India.

Placement ideas and direction :

- The idol should be placed in the southwest direction of home or office.
- You can worship the idol in the temple, home, or office.
- The statue can be placed at the entrance of your home or temple.
- It will also be eye catching to keep the statue in the park, garden, or landscaping.
- Don't give a second thought to gift your loved one, on their special occasion.

Utilities by keeping the sacred statue :

- It is believed that placing a five-faced idol of Lord Hanuman wards off evil energy and that households don't suffer any problem.
- It also helps in getting Goddess Laxmi's blessing.
- Considering Vaastu, all Vaastu dosha gets destroyed with his grace.
- The five-faced idol not only relief from various diseases and removes all planetary dosha.

Tips for cleaning the stone sculptures:

- The statue is made from soapstone, which is famous for its durability.
 - Its main advantages are its non-porous and shatter-proof nature.
 - To clean the sculpt, take a soft cloth and wipe the surface of the statue.
 - Keep dusting it every so often to keep the dust at bay from the stone sculptures.
-



CRAFTS ODISHA

Sand Stone Vishnu Anantasayana Statue

[Read More](#)

SKU: 01446

Price: Call for price

Stock: instock

Categories: [Hindu Statues](#), [Statues & Sculptures](#), [Vishnu Statues](#)

Tags: [Garden Stone Statue](#), [Outdoor Stone Statue](#), [Stone Narayan Statue for Home](#), [Stone Statue for Villa](#), [Vishnu Anantaayana Statue](#)

Product Description



CRAFTS ODISHA

Grey Soapstone Maa Kali Standing on Lord Shiva Idol 4 inch

[Read More](#)

SKU: 01436

Price: ₹3,500.00 inc. GST

Stock: instock

Categories: [Hindu Statues](#), [Kali statue](#), [Statues & Sculptures](#)

Tags: [Maa Kali Ido for Home Decor](#), [Maa Kali Idol for Puja](#), [Maa Kali Murti](#), [Maa Kali Statue for Home Decor](#), [Statue for Car Dashboard](#), [Table Top Idols](#), [Table Top Statues](#)

Product Description

The light grey coloration of Devi Maa Kali statue is a charming option for lighthearted interior themes. It gives endless placement possibilities throughout your home, and perfect-looking décor. **Stone Type:** soapstone / pink stone **Dimensions(HWL):** 4 x 3 x 1 inch **Position:** Standing

About the stunning piece of home décor statue of goddess kali:

- The fearful statue of Goddess Kali is standing on the calm and prostrate body of Lord Shiva.
- She is wearing a garland of skulls, a skirt of arms, and a lolling extended tongue.
- Two hands are held in blessing; one is in Abhay Mudra other is Varada Mudra to her devotees. In the other two hands, she is holding a severed head and a Khadga on the other.
- The masterpiece is well carved by the brilliant craftsman of Odisha, which is, famous for its brilliant artwork globally.

The beauty of life and reality of death::Maa Kali

- She is a ferocious form of Goddess Parvati, wife of Lord Shiva.
- The word Kali means "she who is death" in Sanskrit.
- She represents the complete victory of the divine, overall death and destruction.
- Her appearance conveys a strong message of the dominance of nature over man, even a powerful Lord like Shiva is motionless in front of her.

The home décor statue of Goddess Kali: ideas of placement and benefits

- The statue of Maa kali should be facing south, whether it is in your home or any other place; the South zone serves as the zone of fame and relaxation. So as goddess Kali is the embodiment of energy, which brings you fame and recognition.
- The Temple of your home or office, and shop will be an auspicious place to install the statue.
- You can place the elegant home décor statue on the console, sideboard, or showcase of your living room and office.

Tips to follow while cleaning the home décor statue:

- The beautiful sculpture of the Goddess is made from a non-porous material like pink stone.
- Soapstone is a durable material and weather resistant.
- You can make use of a soft fiber cloth or brush over the surface of the statue.
- The cleaning should be carried every alternative day to ward off the dirt from the home décor sculpt.



CRAFTS ODISHA

Four Handed Ganapati Statue Sitting on Singhashan in Soft Stone 4.5 in

[Read More](#)

SKU: 01435

Price: ₹4,000.00 inc. GST

Stock: instock

Categories: [Ganesha Statues](#), [Hindu Statues](#), [Statues & Sculptures](#)

Tags: [Designer Ganesha Idol](#), [Ganadhipati Statue](#), [Ganapati Statue for Home](#), [Ganesha Murti for Home](#), [Ganesha Statue for Home](#), [Soft Stone Ganesha Statue for Home](#), [Statue for Car Dashboard](#), [Table Top Idols](#), [Table Top Statues](#), [Vighna Vinashak Ganapati Idol](#)

Product Description



CRAFTS ODISHA

Deigner Ganesha Sitting on Shankh Travelling Through Sea Idol 4 in

[Read More](#)

SKU: 01432

Price: ₹3,500.00 inc. GST

Stock: instock

Categories: [Ganesha Statues](#), [Hindu Statues](#), [Statues & Sculptures](#)

Tags: [Designer Ganesha Idol](#), [Ganapati Statue for Home](#), [Ganesha Murti for Home](#), [Ganesha Sculpture](#), [Statue for Car Dashboard](#), [Table Top Idols](#), [Table Top Statues](#)

Product Description



Unique Radha Krishna Love Story Soap Stone Statue 8.5 inch

[Read More](#)

SKU: 01430

Price: ₹20,000.00 inc. GST

Stock: instock

Categories: [Hindu Statues](#), [Krishna Statues](#), [Statues & Sculptures](#)

Tags: [Dancing Radha Krishna Idols](#), [Radha Krishna Idol for Home](#), [Radha Krishna Moorti](#), [Radha Krishna Murti](#), [Radha Krishna Murti for Home](#), [radha krishna statue](#), [statue for home decor](#), [Table Top Statues](#)

Product Description



Unique Res... Bhagwan on... Idol 8 inch

[Read More](#)

SKU: 01428

Price: ₹17,000.00

Stock: instock

Categories: [Ganes](#)
[& Sculptures](#)

Tags: [Designer Gan](#)
[Ganapati Statue for](#)
[sculpture](#), [Ganesh S](#)

[Table Top Decor](#), [Table Top Idols](#), [Table Top Statues](#),
[Vighna Vinashak Ganapati Idol](#)

Product Description



Designer Rare Ganesha Statue Resting on 5 Headed Snake 5 in

[Read More](#)

SKU: 01426

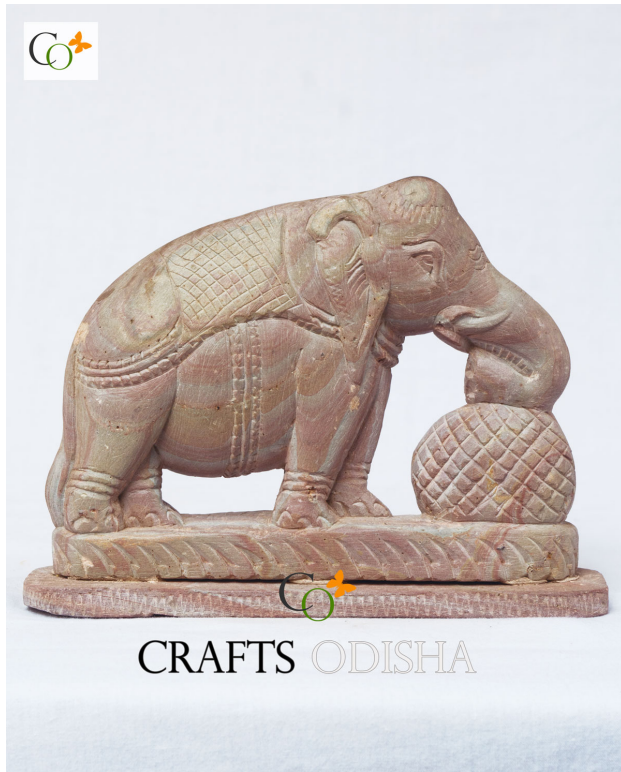
Price: ₹7,000.00 inc. GST

Stock: instock

Categories: [Ganesha Statues](#), [Hindu Statues](#), [Statues & Sculptures](#)

Tags: [Designer Ganesha Idol](#), [Ganapati Statue for Home](#), [Ganesha Moorti Idol](#), [Ganesha Murti for Home](#), [New Style Ganesh Murti](#), [Statue for Car Dashboard](#), [statue for home decor](#), [Table Top Decor](#), [Table Top Idols](#), [Table Top Statues](#), [Vighna Vinashak Ganapati Idol](#)

Product Description



Soapstone Unique Designer Elephant Statue 6.5 inch

[Read More](#)

SKU: 01425

Price: ₹6,160.00 inc. GST

Stock: instock

Categories: [Animals & Birds Statues](#), [Elephant Statue](#), [Hindu Statues](#), [Statues & Sculptures](#)

Tags: [Elephant figurine](#), [Elephant Idol](#), [Elephant Statue](#), [Elephant Statue for Home](#), [gifting statue](#), [statue for home decor](#), [table decor](#), [table top](#), [Table Top Decor](#), [Table Top Idols](#), [Table Top Statues](#), [Vastu Elephant Idol](#)

Product Description



Sitting Lord Shiva Idol for Home Puja in Soapstone Statue

[Read More](#)

SKU: 01424

Price: ₹4,000.00 inc. GST

Stock: instock

Categories: [Hindu Statues](#), [Shiv Ji Statues](#), [Statues & Sculptures](#)

Tags: [Blessing Shiva](#), [God Shiv Ji Moorti](#), [Lokanath Shiv Ji Statue](#), [Lord Shiva Statue](#), [Lord Shiva Statue for Puja](#), [Shiv ji Idols](#), [Shiv Ji Statue for Home](#)

Product Description



Soapstone Sitting Shiv Ji 4 inch Idol for Home

[Read More](#)

SKU: 01423

Price: ₹4,000.00 inc. GST

Stock: instock

Categories: [Hindu Statues](#), [Shiv Ji Statues](#), [Statues & Sculptures](#)

Tags: [Blessing Shiva](#), [God Shiv Ji Moorti](#), [hiv](#), [Lokanath Shiv Ji Statue](#), [Lord Shiva Statue](#), [Lord Shiva Statue for Puja](#), [Shiv ji Idols](#), [Shiv Ji Statue for Home](#)

Product Description



Rare Unique Ganesha Soap Stone Statue Sitting on Shankh 6 in

[Read More](#)

SKU: 01421

Price: ₹7,000.00 inc. GST

Stock: instock

Categories: [Ganesha Statues](#), [Hindu Statues](#), [Statues & Sculptures](#)

Tags: [Designer Ganesha Idol](#), [Ganapati Idol](#), [Ganapati Statue](#), [Ganapati Statue for Home](#), [Ganesha Murti for Home](#), [Ganesha Statue for Home](#), [Interior Designing Statue](#), [New Style Ganesh Murti](#), [Soap Stone Statue For Home](#), [Vighna Vinashak Ganapati Idol](#)

Product Description



CRAFTS ODISHA

Rare Bala Krishna Eating Makhan Soap Stone Statue 4.5 inch

[Read More](#)

SKU: 01419

Price: ₹4,000.00 inc. GST

Stock: instock

Categories: [Hindu Statues](#), [Laddu Gopal Murti](#), [Statues & Sculptures](#)

Tags: [Baby Krishna Idol](#), [Child Krishna Statue](#)

Product Description

The Bala Krishna eating Makhan idol is not only serving a fantastic display but also spreads serenity in the atmosphere. Just amplify the visual interest with a casual look!! **Material:** Pink stone / Soapstone **Dimension(HWL):** 3 x 4.5 x 1.5 inch **Position:** Sitting **The adolescent stone sculptures of Bala Krishna:**

- The stone sculpture of Bala Krishan is sitting on a beautiful lotus pedestal.
- The pretty Bala Gopal is seen holding Ladoo in one hand with a relish expression on his face.
- He is widely known as laddoo Gopal. The laddoo of butter.
- The stone sculpture of the Balakrishna is embellished with many ornaments engraved within it.
- Odisha is well renowned for its magnificent stone carving by skilled artisans of its land.

The alluring Bala Krishna:: The mischievous butter thief:

- Bala Krishna is the childhood form of Lord Krishna. Lord Vishnu has appeared many times on earth, Lord Krishna is one of the avatars.
- He has shown his divine miracles, since birth, widely known as his "Bal Leela".
- He was very mischievous and a prankster in his childhood.

- From his early childhood, he started stealing butter from his own as well as from the neighbors. From which he is famed as "Makhan Chor " means "the butter thief".
- He is also popular by the name of Ladoo Gopal. Who loves Ladoo of Makhan (Butter).

Placement possibilities with the benefit of keeping the engaging stone sculptures:

- Placing the Bala Krishna in the Northeast corner will be very auspicious. Make sure that it faces east to west or vice versa while placing it.
- Couples who are expecting a lovely child or any childless couple are believed to bestow with his grace.
- Lord Krishna is believed to be the figure of love and compassion, so, keeping an idol of it would amplify the love and affection between the family and for the couples.
- Keeping a Bala Krishna statue at home or office will bring happiness, prosperity, and good luck.
- The temple of your home/office/institute is also an appropriate place to install the enchanting statue.
- You can place him on the console, ascent, sideboard, and the showcase of your living room.
- Can be proved to be a pleasing gift for your dear one on their special occasion.

Care and guidance tips for the stone sculptures:

- The non-porosity is a major advantage of Soapstone.
 - It is a weatherproof material. It can stand in any weather and is easy to clean.
 - Take a soft cloth or brush and wipe down the surface of the statue.
 - Follow the cleaning process every alternative day to ward off dust.
-