



Suna Besha of Lord Jagannath Tasar Painting



[Read More](#)

SKU: 00836

Price: ₹25,760.00 inc. GST

Stock: outofstock

Categories: [Patachitra Paintings](#)

Tags: [canvas painting](#), [home décor](#), [interior designing](#), [jagannath jiu painting](#), [lord jagannath painting](#), [odisha paintings](#), [pattachitra art](#), [pattachitra paintings](#), [puri jagannath paintings](#), [suna besha paintings](#), [tasar paintings](#), [wall decor](#)

Product Description



Lord Jagannath Chitalagi Besha Tasar Painting



[Read More](#)

SKU: 00839

Price: ₹29,120.00 inc. GST

Stock: outofstock

Categories: [Patachitra Paintings](#)

Tags: [canvas painting](#), [home décor](#), [interior designing](#), [jagannath jiu painting](#), [lord jagannath painting](#), [odisha paintings](#), [pattachitra art](#), [pattachitra paintings](#), [puri jagannath paintings](#), [tasar paintings](#), [wall decor](#)

Product Description

Lord Jagannath Chitalagi Besha Tasar Painting. The vibrant colors create the look and show the artist's masterpiece. A beautiful traditional touch to your wall.

Material: Tasar fabric.

Dimension(HW): 20 x 29 inch

Weight: 0.1 kg

Odisha, Jagannath temple is one of the Char Dham for pilgrims sites in India. The state is also renowned for its ancient handicrafts heritage. Pattachitra is one of the oldest artwork of Odisha. Depicts the Hindu mythological and folk tales.

Patta means canvas and Chitra means painting.

Lord Jagannath have 32 Besha. Here Besha means attire, dress, or adornment. Deities from many temples are dressed and decorated in many manners. In Jagannath puri also the trinity dressed with usual to occasional ornamentation according to the festival and tithi. Every day from the Mangala aarti to Ratri pahuda the deities get dressed with every pahuda. When there is a special occasion in a special festival the deities get a special Besha. Like Chitalagi Amavasya it falls on the new moon day of Shravana month known as Chateau Amavasya. A special ritual is observed on this day. The forehead of the three gods is embellished with a Chita. The word Chita means ornamentation of the forehead with materials like bezoar, sandalwood, musk. But in Jagannath temple puri, the Chita is made from gold, diamond, emerald, sapphire, ruby. The Sevak adorn the deities with the Chita on the day of Shravana Amavasya. The Chita is also removed from the head in the Snana Purnima in which the three siblings visit Gundicha temple for nine days and again put it in the Shravana month.

A special pudding made from rice called "Chateau Pitha" was offered to the deities. The Chateau Amavasya festival is also celebrated as an agricultural festival of the farmers. This day's farmers go to their peddy fields and pray to yield good crops.

You can give your wall a unique fine art display, with a spiritual appeal. The fascinating painting would amplify the wall ornamentation with wonders. You can opt to hang the painting at your living, study, library, office, gallery, etc.

Care: Use a dry soft brush to clean the painting, gently wipe the surface.



Lord Jagannath Ghodalagi Besha Tasar Painting



[Read More](#)

SKU: 00842

Price: ₹29,120.00 inc. GST

Stock: outofstock

Categories: [Patachitra Paintings](#)

Tags: [canvas painting](#), [home décor](#), [interior designing](#), [jagannath jiu painting](#), [lord jagannath painting](#), [odisha paintings](#), [patachitra art](#), [patachitra paintings](#), [puri jagannath paintings](#), [tasar paintings](#), [wall decor](#)

Product Description

Lord Jagannath Ghodalagi Besha Tasar Painting. A unique spiritual illustration. Generate a warm feeling from a single glance.

Material: Tasar fabrics

Dimension(HW): 20 x 30 inch

Weight: 0.1 kg

No wonder Odisha has the holy pilgrims from the Char Dham, one of the Dham is the Shrikhetra Puri. Where the worldwide famous cart festival performed. Full of cultural heritage the land of handicrafts. Patachitra is one of the oldest and most popular living art forms of ancient times. The Patachitra painting is a mythological and folk story inscribed in it. comprises of stories from Lord Jagannath and Vaishnava religion.

Lord Jagannatha with his siblings has many Besha, during the day. The Besha here means the attire and embellishments. There is different occasion and festival where deities dress up and decorate according to the festival. Ghodalagi Besha is one of his Besha from the 32 Besha.

In winter like everyone feels cold, the deities of Jagannath temple also feel the cold for which he adorns The Ghodalagi Besha. From the sixth day of the bright fortnight of Margsira Month to the fifth day of the bright fortnight at Magha, deities wear winter clothes. In Odiya Margasira Shukla

Sasthitithi to Magha Shukla Panchami or known as Basanta Panchami the lords are covered with heavy blankets. Specially designed winter dresses are stored in the Ratna Singhsana. The entire body barring his face is covered in blankets and with headgear made of cotton and wool. The color is changed with each day, as per the temple almanac. Grey for Monday, Tuesday is a mixture of five different colors, blue for Wednesday, yellow for Thursday, white for Friday, black for Saturday, and red for Sunday. The ritual is known as "Odhana Sasthi" and continues till Basanta Panchami.

For the natural colors used in the canvas, the paintings have a soft glow that lasts forever. It's a unique and charming form of deity, to adore your walls. Hang it on walls of living, dining, Bedroom, hotel, cottage, etc.

Care: Gently wipe the surface with a soft cloth or brush



Chitalagi Besha of Puri Jagannath Tasar Painting

[Read More](#)

SKU: 00843

Price: ₹29,120.00 inc. GST

Stock: outofstock

Categories: [Patachitra Paintings](#)

Tags: [canvas painting](#), [home décor](#), [interior designing](#), [jagannath jiu painting](#), [lord jagannath painting](#), [odisha paintings](#), [patachitra art](#), [patachitra paintings](#), [puri jagannath paintings](#), [tasar paintings](#), [wall decor](#)



Product Description

Chitalagi Besha of Puri Jagannath Tasar Painting. A joy to contemplate even without any context.

Material: Tasar fabric

Dimension(HW): 20 x 30 inch

Weight: 0.1 kg

Odisha is famous for, world-famous Jagannath temple, puri. One Dhamas out of the four Dhamas is known as the Purushottama Khestra and the land of handicrafts. Pattachitra art is one of the oldest forms of artwork found in Odisha. "Patta" means canvas "Chitra" means painting, the painting is based on Hindu mythology and folk tales.

In Odiya and Sanskrit, the Besha is described as a dress or embellishing. In Jagannath temple, the three deities are embellished with different Bashas throughout the year. There are also many festivals where the deities get special ornamentation according to the festival.

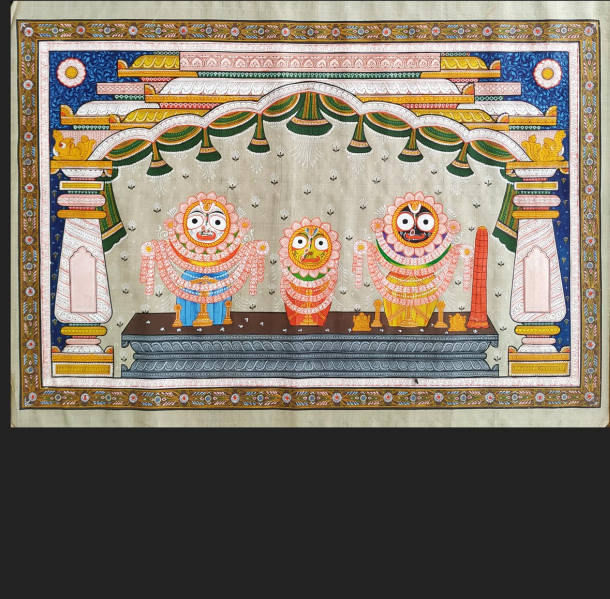
Chitalagi Besha is one Besha from the 32 Besha of Shri jiu. Observed in Chateau Amavsya every year in Shri mandir. Falls in the new moon day of Shravana month. On this day a special ritual performs in the Shri mandir. It is observed on the new moon day of the Shravana month. A special ritual is performed on this occasion. The forehead of the deities is adorned with a Chita. The word Chita means ornamentation of the forehead from different materials like sandalwood, bezoar, musk

But in puri Shri mandir the Chita is made from gold, diamond, sapphire, emerald, and ruby. The Chita is taken out from the head only in the Snana Purnima when the trinity goes to the Gundicha temple for nine days, and again it is put on the forehead in Shraavan month.

A special rice pudding made from rice called "Chateau Pitha" is being offered to the deities. The Chateau Amavasya is celebrated through the state as an agricultural festival of the farmer. On this day the farmer worships his peddy field and prays to yield a good crop.

A spiritual captivated view in your wall decor, with minimal color coordination pop up, whenever it is placed in the home, office, gallery, or any desired area you want to decorate.

Care: Use a soft brush or cloth to dust the painting.



Padma Besha of Lord Jagannath Tasar Painting

[Read More](#)

SKU: 00844

Price: ₹29,120.00 inc. GST

Stock: outofstock

Categories: [Patachitra Paintings](#)

Tags: [canvas painting](#), [home décor](#), [interior designing](#), [jagannath jiu painting](#), [lord jagannath painting](#), [odisha paintings](#), [patachitra art](#), [patachitra paintings](#), [puri jagannath paintings](#), [tasar paintings](#), [wall decor](#)

Product Description

Padma Besha of Lord Jagannath Tasar Painting. Energetic colors with the striking appearance of Lord Jagannatha compliment the artwork of the artisan.

Material: Tasar silk fabric

Dimension(HW): 20x 30 inch

Weight: 0.1 kg

The incredible Odisha, Land of the fourth Dhaam. Where the world-famous Lord Jagannath temple is situated. Also the land of diverse, vibrant handicrafts and its cultural heritage. Patachitra is one of the oldest artwork and rooted in faith with Hindu god and goddess and their mythological and folk stories depicted in the canvas with natural colors.

Padma Bhesa of Lord Jagannatha was observed on the new moon day of Magha and Basanta Panchami. Is the day which goddess Saraswati the provider of education is worshiped. The Padma means The lotus and the flower that appeared from this month onward. The dress material of this Besha is made out of the Lotus flower, (it is specifically provided by the Badachhata matha of puri). There is a story behind this Besha, long ago there is a devotee named Manohar das who was willing to offer Lotus flower, so when he started his journey to the trinity he collect many lotus flowers and tied in his Gamucha (towel), When he opened the towel after reaching the temple he found out some flowers have dried up and some got rotten. Seeing

this the Sevaka of the temple thrashed him for offering rotten flowers to the god. Later the King Gajapati of Puri saw a dream where Lord Jagannath asked him to call Manohar das and offer those flowers to him. To which Manohar das was taken back to the deity offered that lotus from his towel to Lord, and to his surprise, the flowers became fresh again added with fragrance.

To remind his bhakti bhava (devotion), the lords are embellished by Padma Besha. Deities are decorated with Mukhapadma, Kundala, Tahia, Chita, Kundala, Swans, Chakra, Sankha are prepared from thermocol. A special pudding called Padma Khiri is offered on this day with a special type of rice called Padmakeshari.

The painting serves the saintliness and piety of the viewer. As well as decore the wall with the touch of godliness. You can hang it in any room, gallery, study, library, office, etc.

Care: Wiping with a cloth is enough.



Jagannath Jiu Raghunath Besha Tasar Painting

[Read More](#)

SKU: 00845

Price: ₹29,120.00 inc. GST

Stock: outofstock

Categories: [Patachitra Paintings](#)

Tags: [canvas painting](#), [home décor](#), [interior designing](#), [jagannath jiu painting](#), [lord jagannath painting](#), [odisha paintings](#), [patachitra art](#), [patachitra paintings](#), [puri jagannath paintings](#), [tasar paintings](#), [wall decor](#)



Product Description

Jagannath Jiu Raghunath Besha Tasar Painting. Decorate your wall with amazing art prints. A perfect representation of divinity with elegance.

Material: Tusar Fabrics

Dimension (HW): 20 x 30 inch

Weight: 0.1 kg

Odisha is the land of Jagannath, also the land of ancient art form Pattachitra. The painting reflects the mythological and folk tales inspired by Lord Jagannath and the Vaishnava sect.

Besha is a Sanskrit word that means dress or attire. The deities of Shri Jagannath temple in puri are adorned with many different ornamentations throughout the day, starting from mangal aarti to Ratri pahuda. The lord also dressed in different ornamentation on different occasions according to the nature of the festival. The Raghunatha Besha is generally held in the month of Baisakha. In this Besha Lord Jagannath facade as Lord Rama and Shri Balbhadra pretense as Laxmana, with Subhadra, Bharata, Shatrughan in Ratna Singhasana along with other figures like Hanuman, Bibhishana, Angada, Jamabana, Nala, Sushena, almost 32 different statues are placed on a thin plank of wood, attached to the Ratna Singhasana. A wooden platform temporarily made from Ratnasinghasana to the Kalahari Dwara looks like the courtroom of Lord Rama. Lord Jagannath pretense as Lord Rama in Veerasana pose adorns with many pieces of jewelry like Bala, Hara, Baju and a Naka Dandi attached o the nose of the deities, holding a bow.

The floral borders are an important part of Pattachitra art. It distinguishes it from every other. The Tasar fabric gives long life to the artwork. The painting is like an ocean of bliss from the trinity.

Placement: The holiness of the painting is worth watching. Amplify any decor of the wall, like showering of blessing from the picture in the atmosphere. Suitable to place on any wall of the rooms like living, bedroom, study, gallery, office, etc.

Care: Wipe the surface with a cloth gently.



Lord Jagannath Suna Besha Tasar Painting

[Read More](#)

SKU: 00846

Price: ₹31,360.00 inc. GST

Stock: outofstock

Categories: [Patachitra Paintings](#)

Tags: [canvas painting](#), [home décor](#), [interior designing](#), [jagannath jiu painting](#), [lord jagannath painting](#), [odisha paintings](#), [patachitra art](#), [patachitra paintings](#), [puri jagannath paintings](#), [tasar paintings](#), [wall decor](#)



Product Description



Chitalagi Besha of Lord Jagannath Painting

[Read More](#)

SKU: 00847

Price: ₹29,120.00 inc. GST

Stock: outofstock

Categories: [Patachitra Paintings](#)

Tags: [canvas painting](#), [home décor](#), [interior designing](#), [jagannath jiu painting](#), [lord jagannath painting](#), [odisha paintings](#), [patachitra art](#), [patachitra paintings](#), [puri jagannath paintings](#), [tasar paintings](#), [wall decor](#)



Product Description

Chitalagi Besha of Lord Jagannath Painting. Rich and traditional decor for your interior. Hand-painted with natural colors and brush reflects the creativity of the artisans.

Material: Tasar fabric

Dimension(HW): 20 x 30 inch

Weight :0.1 kg

Odisha is the land of Jagannath. Pattachitra involved one of the oldest and traditional arts of Odisha. **Patta** means **canvas** and **Chitra** means **pictures**. Painting made on cloth. Based on the Hindu mythological portrayal and folktales inscribed in it. Usually comprise the stories of Lord Jagannath and Vaishnava religion.

In Oriya and Sanskrit, the "Besa" means dress or embellishment. In many temples, deities are dressed and decorated in different traditional ways. Every day starting from the mangal aarti ti Ratri pahuda Lord Jagannath wears different types of ornaments and jewels. The Chitalagi Besha is one of his many Besha, especially performed on the new moon day of Shravana month. **Chita** means ornamentation of the forehead with stuffs like Chandan(sandal), gorachana(bezoar), musk, etc. But in Puri, **Chita** is made from gold diamond sapphire and emerald to put on the forehead of three principal deities on Shravana Amavasya. This is removed from the head only in Snana Purnima as they travel in the cart to Gundicha temple for 9 days and again put on the forehead of the trinity on the same day.

The ritual is celebrated as Chitraka Parba, in Jagannath temple. A special rice cake named Chateau Pitha was offered to the deity. It is also an agricultural festival of Odisha. Farmers worship their peddy fields on this occasion.

Placement: The Pattachitra gives ethnic look to the wall. Perfect decor for living, bedroom, kids study, dining, office, gallery. Hang the product perfectly with an edge.

Care: As it is made of fabric, wiping it with a cloth is enough.



Gajaudharana Besha of Jagannath Jiu Painting



[Read More](#)

SKU: 00848

Price: ₹29,120.00 inc. GST

Stock: outofstock

Categories: [Patachitra Paintings](#)

Tags: [canvas painting](#), [home décor](#), [interior designing](#), [jagannath jiu painting](#), [lord jagannath painting](#), [odisha paintings](#), [patachitra art](#), [patachitra paintings](#), [puri jagannath paintings](#), [tasar paintings](#), [wall decor](#)

Product Description



Lord Jagannath Badasinghar Besha Painting



[Read More](#)

SKU: 00849

Price: ₹11,200.00 inc. GST

Stock: outofstock

Categories: [Patachitra Paintings](#)

Tags: [canvas painting](#), [home décor](#), [interior designing](#), [jagannath jiu painting](#), [lord jagannath painting](#), [odisha paintings](#), [patachitra art](#), [patachitra paintings](#), [puri jagannath paintings](#), [tasar paintings](#), [wall decor](#)

Product Description
