



Fish Lampshade 1 Single Colour

[Read More](#)

SKU: 00026

Price: ₹840.00 inc. GST

Stock: instock

Categories: [Applique](#), [Applique Lampshades](#), [Lighting](#)

Tags: [applique lamp shades](#), [cotton lamp shades](#), [fabric lamp shades](#), [lamp shades](#), [light shades](#), [odisha lamp shades](#), [Pipili Applique](#), [pipili lamp shades](#)

Product Description

This beautiful blue coloured fish lampshade is a bright example of the wide variety of designs available in Pipli. The embroidery design of this lampshade is beautiful and exhibits the exquisiteness of artworks of Odisha. The mirror studded this masterpiece will be an amazing add-on to the beauty of your house. This art form evolved since British era when people lacked proper clothes to wear and used to patch up their torn clothes with different clothes. So to beautify your house or office premises there cannot be a better option. So, glam up your house with this ethnic piece of art work at a very affordable price right at your finger tip.



Flower Lampshade 2 colour

[Read More](#)

SKU: 00023

Price: ₹861.00 inc. GST

Stock: instock

Categories: [Applique](#), [Applique Lampshades](#), [Lighting](#)

Tags: [applique lamp shades](#), [cotton lamp shades](#), [fabric lamp shades](#), [lamp shades](#), [light shades](#), [odisha lamp shades](#), [Pipili Applique](#), [pipili lamp shades](#)

Product Description

After something more traditional with natural fabric with an easy install the flower lampshade is definitely a contender for a modern chandelier.

Material: Cotton fabric

Dimension(HWL): 14 inch

Height: 14 inch

Art form: Pipili applique work

Weight: 0.2kg

Description of the flower lampshade:

- The idol presented here is a flower applique lampshade.
- The lampshade is coming in two colors: red and blue.
- The mirror studded in this masterpiece will be an amazing add-on to the beauty of your house with two different shades of blue-colored clothes.
- One of the most widespread craftworks of Orissa is the Pipili applique work that comes from the town of Pipili.

Uses of the flower lampshade for decoration and illumination:

- The lampshade is attached to the ceiling and hangs down on a rod, cable, pipe, chain, or rope.
- Lighting the lamps with glowing shades helps in creating a pleasant ambiance at home.
- The sheer luxury that a hanging lampshade exudes, can transform any home.
- The perfect option for people, who want traditional hanging lights in their homes.
- Lanterns are attractive hanging lighting options that suit various budgets and home styles and can be used indoors, as well as, outdoors. There are multiple ways in which you can hang these unique hanging lights on various nooks and hooks on both walls and ceilings.
- Hanging decorative lanterns add appeal and provide drama, as well as effective task lighting. Simple and elegant, hanging lanterns can elevate the decor quotient of a space.
- A design trend that is beyond traditional lighting and doubles up as an art piece.
- These ceiling-hanging lights are perfect for living rooms.
- Used them as a light for the Diwali festival, Christmas lanterns, etc.
- Enhance the beauty of trees by hanging the lights.

How to clean the lampshade correctly:

- The best method of cleaning the applique work is by soaking it in clean water once or twice, (do not squeeze) and then letting it air dry.

- Make sure you unfasten the bulb from the lampshade.



Star Lampshade-Red

[Read More](#)

SKU: 00021

Price: ₹903.00 inc. GST

Stock: instock

Categories: [Applique](#), [Applique Lampshades](#), [Lighting](#)

Tags: [applique lamp shades](#), [cotton lamp shades](#), [fabric lamp shades](#), [lamp shades](#), [light shades](#), [odisha lamp shades](#), [Pipili Applique](#), [pipili lamp shades](#)

Product Description

Designed by craftsman of CRAFTS ODISHA the iconic hanging star lampshade-red offers traditional intricacy with a decidedly contemporary twist.

Material: Cotton fabric

Dimension(HWL): 10 x 12 x 12 inch

Height: 12 inch

Art form: Pipili applique work

Weight: 0.2 kg

Characterization of the star lampshade:

- The art presented here is of a star applique lampshade.
- The lampshade is coming in two colors red and white;
- The mirror studded in this chef-d'oeuvre will be an amazing add-on to the looks of your house.
- One of its famous crafts of Orissa is the Pipili applique work that comes from the town of Pipli.

Numerous uses of the star lampshade:

- Make it a focal point of decor at the ceiling of your home.
- You can hang it over the dining table, above the bed, and over kitchen countertops.

- Why be restricted only to dark use. Use in the foyer, study, balcony, or over an artwork.
- The bedroom is a space that should have a calm and relaxing ambiance. Hanging lanterns or lights are perfect lighting options for the room, that can completely transform the look.
- A pendant light is attached to the ceiling and hangs down on a rod, cable, pipe, chain, or rope. Depending on the style of one's home, one can hang lights as a cluster or as a stand-alone light fixture.
- Lamps with glowing shades help in creating a pleasant ambiance.
- The hanging lampshade is the perfect option for people, who want traditional hanging lights in their homes.
- On festive occasions like Diwali, Christmas lanterns are attractive hanging lighting options that suit various budgets and home styles and can be used indoors, as well as outdoors.

Cleaning the lampshade:

- The most suitable way of cleaning the applique work is by wetting it in clean water once or twice, (do not twist) and then letting it air or sundry.
- Before washing the lampshade separate the bulb from the lampshade.



Jhalar 1 Step Lampshade (small)

[Read More](#)

SKU: 00029

Price: ₹714.00 inc. GST

Stock: instock

Categories: [Applique](#), [Applique Lampshades](#), [Lighting](#)

Tags: [applique lamp shades](#), [cotton lamp shades](#), [fabric lamp shades](#), [lamp shades](#), [light shades](#), [odisha lamp shades](#), [Pipili Applique](#), [pipili lamp shades](#)

Product Description

This wonderful piece of artwork exhibits the hard-work, patience and creativity of the artisans of Pipli. These applique works have not only brought name and fame for the small town, Pipli but also have enhanced the level of Indian art forms in International level. This beautiful design is made out of stitching yellow and blue coloured clothes together. Designed in a layered form and decorated with beautiful embroidery and mirrors. So to enhance the charm of your house and office bring this amazing applique piece. This piece even makes out an amazing gift to be gifted your loved ones. So what are you waiting for experience the exquisiteness of Odisha in

your own surrounding.



Jhalar Lampshade

[Read More](#)

SKU: ap011

Price: ₹997.50 Original price was: ₹997.50. ~~₹577.50~~
Current price is: ₹577.50. inc. GST

Stock: instock

Categories: [Applique](#), [Lighting](#)

Tags: [applique](#), [red](#)

Product Description



Wooden Lord Jagannath Premium Idols Set

[Read More](#)

SKU: 00690

Price: ₹4,500.00 inc. GST

Stock: onbackorder

Categories: [Jagannath Idol](#), [Hindu Statues](#)

Tags: [jagannath baladev subhadra statue](#), [jagannath idols](#), [statue for puja](#), [wooden artifact](#), [wooden idols](#)

Product Description



Marble Dust Fiber Puri Jagannath Statue With Neela Chakra 6 inch

[Read More](#)

SKU: 01341

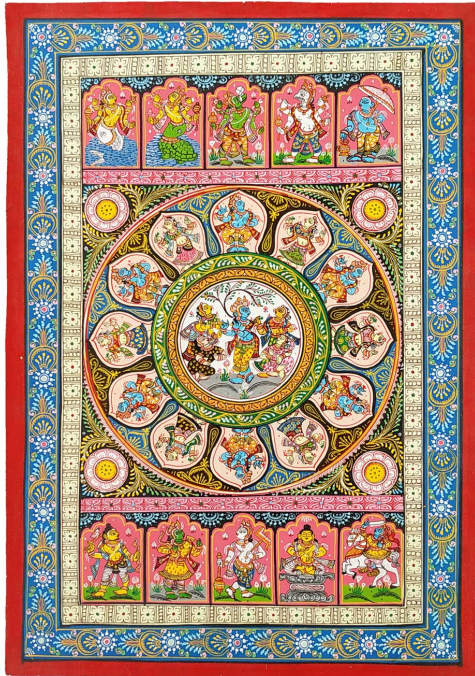
Price: ₹900.00 inc. GST

Stock: onbackorder

Categories: [Hindu Statues](#), [Jagannath Idol](#)

Tags: [Marble Dust Statues](#), [Resin Idols](#)

Product Description



Rasa Leela and Dasavatar Chandua Pattachitra Painting

[Read More](#)

SKU: 00757

Price: ₹12,880.00 inc. GST

Stock: onbackorder

Categories: [Patachitra Paintings](#), [Wall Decor](#)

Tags: [canvas painting](#), [home décor](#), [interior designing](#), [odisha paintings](#), [patachitra art](#), [patachitra paintings](#), [wall decor](#)

Product Description



Lord Shiva - Paper Mache Mask

[Read More](#)

SKU: 00518

Price: ₹1,048.95 inc. GST

Stock: onbackorder

Categories: [Paper Mache Masks](#), [Wall Decor](#)

Tags: [crafts odisha](#), [door hanging](#), [fashion](#), [handicrafts](#), [handmade paper](#), [home décor](#), [india](#), [lifestyle](#), [odisha](#), [paper mache mask](#), [wall hanging](#)

Product Description

Lord Shiva is known as the God of mercy and kindness. He protects his devotees from all evil and blesses them with grace, knowledge and peace. Lord Shiva is the destructor of evil and transformer of the universe for a new beginning. Shiva is referred as the Satyam, Shivam, Sundaram which means truth, goodness and beauty. Shiva has great abilities to purify; he is the best of the yogis, formless, limitless, transcendent and unchanging absolute Brahman, and the soul of the universe. Here the lord is beautifully created out of paper with absolute perfection and is colored white with accessories to beautify as well as a crown over his head to magnify the beauty of the mask. Bring this lord home to feel protected under his shadow and stay protected from all forms of evil and be blessed.



Deep Ganesha

[Read More](#)

SKU: 00005

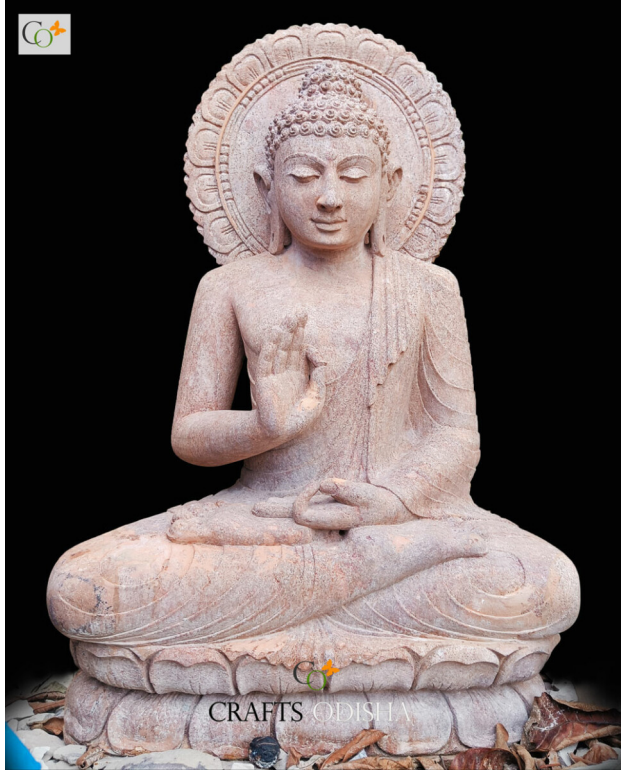
Price: ₹5.00 inc. GST

Stock: onbackorder

Categories: [Lighting](#), [Table Tops](#), [Terracotta](#)

Product Description

Add a splash of colour to your home decor with this coloured showpiece. This showpiece looks quite appealing.



Buddha Statue for Home Vastu Sandstone

[Read More](#)

SKU: 01776

Price: ₹60,000.00 inc. GST

Stock: onbackorder

Categories: [Buddha Statues](#), [Garden Buddha Statue](#), [Sitting Buddha Statues](#), [Statues & Sculptures](#)

Product Description

Buddha Statue for Home Vastu balances beauty and functionality with pure grace. This beautiful piece delivers an updated take on a true classic.

Material: Sandstone Redstone statue

Dimension(HWL): 36 x 20 x 10 inch

Position: Sitting

Height: 3 ft

Characteristics of the Buddha Statue for Home:

- A fine sculpture of Protection/Blessing Buddha is displayed above.
- The statue seen in rich white sits over a fully bloomed lotus pedestal.
- As shown above, his right hand is raised and facing outward symbolically portraying a guard.

- While the left one extended towards the palm up in the lap which means courage and offers safeness.

About the blessing Buddha:

- Siddhartha Gautama is "Buddha" which stands for the "Awakened One".
- Born as a monarchial Prince whose father had protected him against any kind of distress. From the time of his birth until the age of 29, he was provided everything that one could crave, looks and wealth, a beautiful wife, and a healthy son.
- He encountered sickness, old age, and death for the first time when he reached the age of 29. Shattered by what he saw Goutama learned that all beings were subject to these things, no matter how much they had of material goods and grandeur. He could no longer ignore the fact of life.
- So, he left his home forever and took up the begging bowl and staff of the Samana to seek the end of his samsara, the constant cycle of births, deaths, and rebirths.
- Gautama sat under a huge tree that was later called the "wisdom," or "Bodhi" tree, and asserted not to leave it until he achieved the liberating understanding he sought.
- He undertook a long and challenging period of meditation that lead up to his gaining deep insights into a human necessity. Ultimately, in overpowering the tricks of the demonic Mara, he attains Nibbana (or nirvana).

Tips for creating a place for the Buddha statue:

- If there is a pond, pool, or water fountain in your garden plant the Buddha statue there to create the ultimate Zen ambiance.
- Pruned evergreens are great but little hills with groundcover plants are more creative if you place your statue there.
- Create natural-looking paths in your garden to lead it to the statue where you placed it.
- If you have a moist, shady area in your garden where isn't any foot traffic, grow moss there. It's a beautiful statue placement idea for a zen look.
- You need a lot of small stones or sand to design dry landscapes where you can exhibit your statue.
- Adding stones and pebbles in different sizes is a great way to surround your Buddha statue.
- Using subtle color contrast and bold textural differences can create the interest necessary in a minimalist garden to exhibit your statue.
- Stone lanterns shaped as pagodas are quite popular features of zen gardens, If you have one of them create a zen feel near the statue.

- Adorn your statue with evergreen plants as they usually come in different sizes with different shapes carefully mixed together.

Cleaning tips for Buddha Statue for Home Vastu :

- Start the cleaning by dampening it using a hose spray. Once it got soaked, rinse it thoroughly with a cloth or sponge.
- Let it air dry after giving a final bath.



Sandstone Stone Mahakaleswar God Statue Murti for Outdoor and Temple

[Read More](#)

SKU: 01635

Price: ₹65,000.00 inc. GST

Stock: onbackorder

Categories: [Shiv Ji Statues](#), [Hindu Statues](#), [Statues & Sculptures](#)

Tags: [Big Lord Shiv Ji Statue](#), [Mahakaleswar Stone Statue Manufacturer](#), [Mahakaleswar Temple Stone Statue Manufacturer](#), [Sandstone Stone God Goddesses Statue Manufacturer](#), [Sandstone Stone Statue and Sculpture Manufacturer](#), [Sandstone Stone Statue For Home and Garden](#)

Product Description

CRAFTS ODISHA has always come forward to fulfill the customized demand of its customer in the best way possible. Like this Mahakaleswar god statue for outdoor & temples specially made on demand of our loyal customer. **Material:** Sandstone/ Redstone **Dimension(HWL):** 27 x 18 x 16 inch **Position:** Sitting **Height:** 2.5 ft (Aprox.)
Features of the unique bust:

- The statue shown above is Maha Kaleswar. Ruler of time or the Lord of the universe.

- With five heads, 4 in all directions and one head is top of all. depicting the Mahakal Swaroop of Lord Shiva.
- Rugged finished, giving an age-old look to the sculpture.

Mahakaleshwar: Swayambhu

- "Mahakal" means the Lord of time & death, it represents Lord Shiva.
- It's one of the 12 Jyotirling of India.
- He said to be Dakshinamukhi, south faced. He is said to be Swayambhu means born to itself.
- The king of Ujjain "Chandrasena" was a great devotee of Lord Shiva, while he was outskirts of the city a rival king Ripudamana & Singhaditya with the help of a demon named Dushanan plotted to attack Ujjain.
- To save the city of Ujjain, King Chandrasena along with a priest named Vridhi prayed to Lord Shiva there is when Lord Shiva came in his Mahakal form and saved them.
- From that day on Lord Mahakal lives in the temple of Ujjain in form of Linga.

Suggestions where you can place down the almighty:

- The Statue of Lord Mahakaleshwar can be designed to place in temples or shrines.
- People who have an outdoor temple for worshipping the god, on their premises can be placed there.
- Also, underlay atop of Lord Shiva temple or at the entrance.

Flukes:

- It is believed that Lord Shiva always helps his devotees from the obstacles in their life.
- Also, free them from death and diseases.
- He bestowed his devotee with happiness, prosperity, and good health.

Keep your statue clean with some simple steps as mentioned below:

- Sandstone is hard material best suited to outdoor decoration for its weather-resistant and durability.
- The procedure of cleaning may follow by bathing the whole sculpt with after, for this, you may use hose spray or a bucket of water, as per your convenience.
- After dampening the sculpture, use a soft brush to a tea towel to remove dust or debris gently from the surface. Now with a towel either wipe it to dry or allow it to air dry
- With these specific methods of cleaning, you can restore the natural beauty of your outdoor stone statue. You may repeat it every once in a while depending open the

exposure of the sculpture.



Lord Vitthal Rakhumai Soapstone Idol for Home 5 inch

[Read More](#)

SKU: 01429

Price: ₹10,000.00 inc. GST

Stock: onbackorder

Categories: [Vishnu Statues](#), [Hindu Statues](#), [Statues & Sculptures](#)

Tags: [Car Dashboard Idols](#), [Car Dashboard Statues](#), [gifting statue](#), [Statue for Car Dashboard](#), [Stone Vishnu Statue For Home](#), [Table Top Idols](#), [Table Top Statues](#), [Vitthal Idol for puja](#), [Vitthal Statue for Home](#)

Product Description



Small Sitting Namaste Buddha Idol in Pink Soft Stone 4 inch

[Read More](#)

SKU: 01415

Price: ₹4,000.00 inc. GST

Stock: onbackorder

Categories: [Sitting Buddha Statues](#), [Buddha Statues](#), [Statues & Sculptures](#)

Tags: [buddha statue](#), [Lord Buddha Idols](#), [Meditating Buddha Sculpture](#), [Meditation Buddha Statue](#), [Sitting Lord Buddha Statue](#), [Soapstone buddha statue](#), [stone buddha statue](#)

Product Description

Small Sitting Namaste Buddha Idol in Pink Soft Stone 4 inch. A simple alternative to Buddha's other traditional postures. Wide-reaching positive impact where ever you place it.

Material: Soapstone/Pinkstone Dimension(HWL): 4 x 2.5 x 1.5 Position: Sitting Buddha means "the awaken one" here awaken means the awakened mind, there are seven qualities that led us to an awakened mind, these are mindfulness, investigation, energy, joy, tranquility, concentration, equanimity. With these qualities, we can see things as they are and not what we imagine them to be. Lord Buddha was born as a prince of the Shakya tribe, named Siddhartha Gautama. Raised and brought up with all opulence and luxury in his palace one can fantasize over, unaware of misery, sorrow, and suffering of human faces in the outside world. Married and had a son. One day Gautama ventured out of his palace, he saw three definite aspects of life each for the first time, he saw an old man, a sick man, a corpse. This scene shook him to the core, he perceived that these are inevitable fates of humans, no one can avoid. And then he saw a holy monk walking with peace and serenity in his face All these made him find a way to overcome the universal suffering. He decamps his spiritual quest by leaving the lavish life behind. For six long years, he followed many ascetic, extreme self-denial, self-deprivation, and self-mortification, even if following the extreme asceticism he couldn't find the answer to his quest. So he abandoned the extremes life nor return to the luxury life instead and discover the middle way, (like neither luxury nor poverty). He sat beneath a Bodhi tree, in deep meditation, and finally achieved enlightenment. The Namaste Buddha/Anjali Buddha widely known as praying Buddha is seen sitting on a lotus pedestal in a double lotus pose known as the Vajrasana pose. The Anjali mudra is expressed with both hands joining together near the chest by pressing the palms of the hands together. The two hands symbolize two inseparable forms of existence, spiritual and material. When it performs near the heart it represents the purity of mind body and speech. With the gesture of namaste Buddha, one can connect to deep peace and serenity. A powerful decor as well as a gift option for your dear ones. **Placement:** It is recommended to place the Anjali mudra statue at the main entrance, living room, or any other place to welcome positive energy. Also ideal for puja room and altar. **Care:** The nonporous material doesn't need much care, gently wiping the surface with a cloth is enough to keep the beauty of the statue.



Pink Soap Stone Earth Touching Buddha Idol 4 inch

[Read More](#)

SKU: 01412

Price: ₹4,000.00 inc. GST

Stock: onbackorder

Categories: [Buddha Statues](#), [Sitting Buddha Statues](#), [Statues & Sculptures](#)

Tags: [buddha statue](#), [Lord Buddha Idols](#), [Meditating Buddha Sculpture](#), [Meditation Buddha Statue](#), [Sitting Buddha Statue](#), [Sitting Lord Buddha Statue](#), [Soapstone buddha statue](#)

Product Description



Beautiful Radha Krishna Idol in Soap Stone Murti 4 inch

[Read More](#)

SKU: 01410

Price: ₹5,000.00 inc. GST

Stock: onbackorder

Categories: [Krishna Statues](#), [Hindu Statues](#), [Statues & Sculptures](#)

Tags: [Radha Krishna Idol for Home](#), [Radha Krishna Moorti](#), [Radha Krishna Murti](#), [Radha Krishna Murti for Home](#), [radha krishna statue](#)

Product Description



Pink Soft Stone Surya Narayan God Idol for Home 4 inch

[Read More](#)

SKU: 01375

Price: ₹4,000.00 inc. GST

Stock: onbackorder

Categories: [Hindu Statues](#), [Other God/Godess Statues](#), [Statues & Sculptures](#)

Tags: [Sun Statue](#), [Sura Puja](#), [Surya Namaskar](#), [Surya Narayan Idol](#), [Surya Remedy](#)

Product Description



Small Green Stone Dancing Ganesha Idol for Home 4 inch

[Read More](#)

SKU: 01374

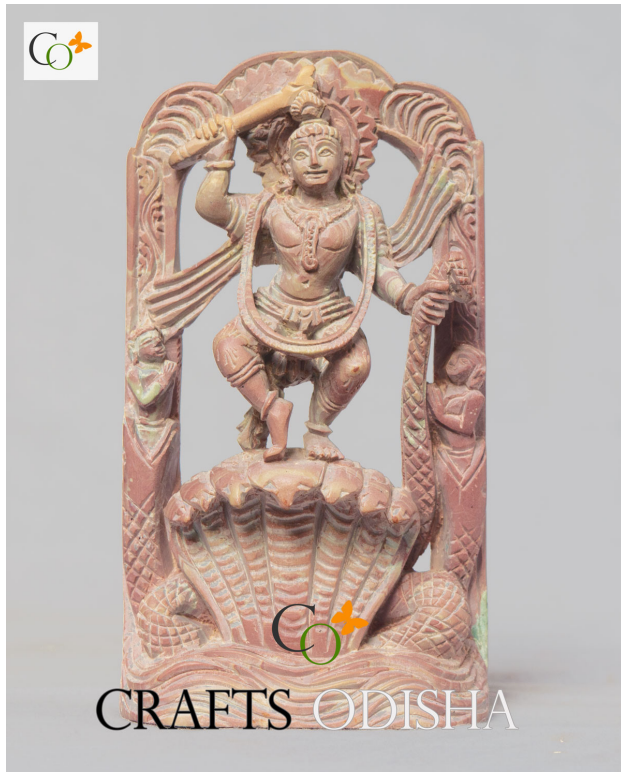
Price: ₹6,000.00 inc. GST

Stock: onbackorder

Categories: [Ganesha Statues](#), [Hindu Statues](#), [Statues & Sculptures](#)

Tags: [Bighna Vinashak Idol](#), [Ganadhipati Statue](#), [Ganapati Statue](#), [Green Stone Ganesha](#), [Green Stone Statue](#)

Product Description



Kaliya Dalan Sri Krishna Statue in Pink Soapstone Statue 4 inch

[Read More](#)

SKU: 01369

Price: ₹5,000.00 inc. GST

Stock: onbackorder

Categories: [Krishna Statues](#), [Hindu Statues](#), [Statues & Sculptures](#)

Tags: [Kaliyadalan Krishna Statue](#), [Krishna Statue](#), [Krishna Stone Statue](#), [Statue for Car Dashboard](#), [statue for home decor](#), [statue for puja](#)

Product Description



Wooden Puri Jagannath Temple 6.5 inch

[Read More](#)

SKU: 01332

Price: ₹2,000.00 inc. GST

Stock: onbackorder

Categories: [Jagannath Idol](#), [Hindu Statues](#)

Tags: [jagannath baladev subhadra statue](#), [Puri Jagannath Dham Statue](#), [Puri Jagannath Temple](#), [wooden jagannath temple](#)

Product Description

There's something so special about having a one-off or limited edition piece of original art in our home. Knowing the meaning behind a piece or about the artist adds to the unique story of our homes the wooden Puri Jagannath temple is the best piece to invest in art. Material: Wood **Dimension(HWL):** 6.5 x 2 x 4 inch **Height:** 6.5 inch **Position:** Sitting **Exposition of the Lord of Puri temple:**

- The sculpture represented here is a replica of the Puri Jagannath temple.
- The idols have been carved out of a wooden stump and brightly painted. He is not shown in human form, unlike other Hindu deities.
- His face is seen merging with the chest. Two huge symmetric circular eyes with no eyelids and two additional stumps on either side serve as the hands of the Lord.
- The legs, neck, and ears of the deity are not depicted in the idol.
- The design of the temple above is made in such a creative way, that you can open and close the door fit to it.

About Puri Jagannath temple significance:

- The supreme god of puri Lord Jagannath along with his elder brother and sister Lord Balabhadra and Goddess Subhadra.
- Jagannath is known to be the incarnation of Lord Vishnu or by some people, an avatar of Lord Krishna.
- His name is a mixture of two words, 'Jagan' meaning **world** and 'Nath' meaning **Lord**.
- Lord Jagannath, his brother Lord Baladeva, and little sister Subhadra Devi are worshipped reverentially.
- According to folklore, Indradyumna was a king and avid worshiper of Lord Vishnu. One night the king napped he saw God Jagannath in his dream.
- He also listened to the voice of Lord Jagannath about an aromatic tree who ordered him to make icons from this tree. So the king made the models of God Jagannath, Balbhadra & Subhadra along with these idols he also made the Sudarshan Chakra.
- Puri is the fourth and last voyage among the Char Dham.

Embellish your home with the wooden Puri Jagannath temple:

- The display cabinet is an interesting place to create balance in your deco.
- So often when decorating, we focus on what's on the floor and neglect our walls so go into displaying the sculpt on a fixed bracket shelf.
- They can be a decor piece in their own right on a tabletop or the center of the coffee table.
- There's no better way to get a bang for your buck than simply switching over your built-in shelf to showcase your masterpiece.

- Free standing shelves and portable shelves are the easiest ways to insert for a more luxe look.
- Use one with a bold color or pattern, they can be like art for a room themselves.
- These can look fabulous as a stand-alone item or work into a styled arrangement beautifully when placed on a console or a sideboard in the entryway or foyer of the home.
- A fabulous gifting idea to present to your dear one.

Blessings of Jagannatha Baldev Subhadra:

- For immense prosperity and wealth.
- It creates a tremendous peaceable environment.
- Chances of your winning legal cases get enhanced.
- Fulfills all wants and desires of the worshiper.

How to upkeep wooden idols:

- Each material needs different cleaning procedures. In the case of wooden sculptures, cleaning is different from other materials.
- Buff the statue with a dry tea towel. It will remove the dust and debris. Wiping can eliminate loose dirt. You can use a hand vacuum to suck out the residues.
- Follow the process from time to time or as per your convenience.



Soapstone Mini Lakshmi Sitting on Narasimha's Lap Idol 2.5 in

[Read More](#)

SKU: 01183

Price: ₹8,000.00 Original price was: ₹8,000.00. ₹6,000.00 Current price is: ₹6,000.00. inc. GST

Stock: onbackorder

Categories: [Narasimha Statue](#), [Hindu Statues](#), [Statues & Sculptures](#)

Tags: [Car Dashboard Accessories](#), [Car Dashboard Idols](#), [Car Dashboard Statues](#), [Dashboard Idols](#)

Product Description

Looking for something that fits well with even a minute of your decor space then the Mini Laxmi Sitting On Laxmi Idol (2.5 inch) is a perfect and pocket-friendly option to meld with a variety of décor styles. **Material:** Pink Soapstone **Dimension(HWL):** 2.4 x 1.5 x 1 inch **Position:** Sitting Statue **Alluring statue of Lord Narasimha:**

- The above statue is seen Lord Narasimha sitting on a beautiful lotus pedestal, while Goddess Laxmi is seen sitting on his lap.
- The statue is made from Pink stone, with a lustrous finish.
- The statue is carved in half man-half lion semblance. Holding a conch and Chakra in the upper right and left hands. The lower two gestured in Varada mudra and Abhay mudra.
- The sculpture is made by the craftsman of Odisha, where stone carving is globally popular for its intricate carving.

Apropos Lord Narsingha:

- Laxmi Narsingha is the fourth incarnation of Lord Vishnu.
- According to Hindu mythology and scriptures, Laxmi Narsingha represents Lord Jagannatha.
- Lord Vishnu took this Avatar in Satya Yuga, to destroy the wicked, protect people from cruelty and establish Dharma.

Few suggestions and directions while placing :

- It is favorable to install the stone sculptures in the north or northeast corner, facing him to the east.
- The statute can perfectly fit in your tiny decor space like cabin, showcase, the cupboard of the living room, and office.
- You can place it on the temple of your home and office, dashboard of your car.
- A pleasant present to gift your dear one on their special occasion.

Advantages of keeping the divine statue:

- Lord Narsingha bestow his devotees with wealth and success.
- Very helpful to ward off the negative impacts from planets.
- Narsingha is primarily known as the great protector who defends and protects his devotee from evil forces.

How to take care of the decorative stone:

- The minute decorative stone is made from Pink stone.
- The main advantage of Pink soapstone is its quality of non-porous and durability.
- For cleaning wipe the statue with a piece of cloth over the surface.
- Keep dusting it every alternate day, to ward off the dust from the surface of the stone sculptures.



Soapstone Sitting Mini Hanuman Statue Ashirvad Mudra 1.8 in

[Read More](#)

SKU: 01178

Price: ₹6,000.00 inc. GST

Stock: onbackorder

Categories: [Hanuman Statue](#), [Hindu Statues](#), [Statues & Sculptures](#)

Tags: [Car Dashboard Accessories](#), [Car Dashboard Idols](#), [Car Dashboard Statues](#), [Dashboard Idols](#), [Hanuman Idol](#)

Product Description

Looking for something to fit into your car dashboard or any tiny space of the home, then sitting mini hanuman statue in Ashirwad mudra will be a charming option to buy for. Material: Soapstone / Pink stone **Dimension(HWL):** 1.8 x 1.4 x 0.4 inch **Position:** Sitting **Description of the beautiful stone statuette:**

- The statuette is seen sitting in Padmasana, posing in Abhay Mudra with one hand while carrying his mace with another on a fully blossomed lotus pedestal.
- The adorable statuette is made by the skilled artificer of Odisha where stone carving is widely famous for its intricate design.

Hanuman: The son of air

- Lord Hanuman is an incarnation of Lord Shiva.

- The name Hanuman in Sanskrit means "Disfigured jaw".
- Lord Hanuman represents strength, devotion, and perseverance.
- Lord Hanuman is always seen beneath the feet of Lord Rama in almost all shrines of Lord Rama.
- Hanuman Jayanti is celebrated twice a year one in Chaitra Shukla paksha in the southern Part and Krushna paksha in the Northern parts of India.

Placement ideas for the stone sculptures :

- The idol of Lord Hanuman should be placed in the south direction of home or office.
- You can worship the idol in the temple of your home or office.
- The tiny decor space of your bookcase, cabin, or cupboard will be a promising option to keep the statue.
- You can place it on the dashboard of your car, study table, or office and reception desk.
- Gift your loved ones this adorable statuette.

Benefits of keeping the Godly statue:

- As the Lord himself symbolizes health and power, worshipping him gives you innumerable boons and blessings.
- He keeps the atrocious effect away from his devotees.
- His blessings help you to excel in exams.
- To overcome complexity in life he removes all the darkness and leads the way to the righteous path.

Instruction for dusting the stone sculptures:

- The statue is made from resilient material like soapstone.
 - Soapstones are non-porous and shatter-proof of nature.
 - For the cleaning, take a soft cloth and wipe down the surface of the statue.
 - Keep dusting it occasionally, to keep the dirt away from the stone sculptures.
-



Cone Shaped Cap Pattachitra Style Wooden Sindur Dani 3.5 in

[Read More](#)

SKU: 01170

Price: ₹1,792.00 inc. GST

Stock: onbackorder

Categories: [Accessories](#), [Sindoor Box](#)

Product Description



Sandstone Buddha Head Statue 16 in

[Read More](#)

SKU: 01020

Price: ₹18,000.00 inc. GST

Stock: onbackorder

Categories: [Buddha Head Statues](#), [Buddha Statues](#), [Statues & Sculptures](#)

Product Description

Sandstone Buddha Head Statue 16 inch. A warm weathered finish, persuasive to the semblance of age. Not only an addition to your rustic décor can be also presented to your dear ones as a serene aa traditional gift. **Material:** Sandstone / Redstone **Dimension(HWL):** 16 x 10 x 10 inch

About the Showpiece: As we all know Lord Budhha statues come in various formations like reclining, standing, sitting, and walking. But from all this his head always remains the same in all postures. The crown of his head represents the deep sense of spirituality, knowledge, and wisdom. His curly hair represents those 108 snails who sacrifice their life to save Lord Buddha, from the hot rays of the sun during his meditative period. The stretched ear depicts his ability to hear the world's sorrow. His closed eyes illustrate the state of deeply indulging in meditation. His smile depicts his better understanding of the universe despite the suffering and the circular dot defines his supernatural vision which can see beyond the material realm. **About Lord Buddha:** Lord Gautama Buddha was born to a king named Shudhdana of the Shakya clan. His father shielded him from any suffering of human life, raised him with all wealth and opulence until the age of twenty-nine Lord Buddha was married and had a son. But when he finally got the glimpse of what a human face in his life, he was devastated. It makes him realize that illness, old age, and death have nothing to do with wealth or power, it's universal suffering where everyone has to go through. So he left all the luxury life that night and went in search of a way to escape from this pain. It took him six years to be enlightened. Which is known as the awakening self, where he choose the middle path, which was included in his first sermon which he deliver to his dispels about, in Sarnath. and spent the remaining life preaching to others the path of achieving enlightenment. Buddhas have been taught how to attain salvation from suffering for oneself alone. **Placement and uses of the Showpiece:** For, academic success put the Buddha bust in your kid's room or the study room. Apart from spiritual significance, the showpiece can prove to be a rustic décor piece. Put the bust, on the foyer, sideboard, or create a showcase using a stand with a few figurines. It can amplify the décor in front of a vibrant color wall, so make sure to embellish the background with a darker color to pop. **Care:** The statue makes brilliant impression handling with age, so the cleaning should be done using a broom or cloth periodically over the surface.
