



## Soap Stone Radha Krishna Under a Tree Statue 30 inch

[Read More](#)

**SKU:** 01084

**Price:** ₹225,000.00 inc. GST

**Stock:** outofstock

**Categories:** [Hindu Statues](#), [Krishna Statues](#), [Statues & Sculptures](#)

### Product Description



## Soap Stone Khanja Work Nataraj Statue 33 in

[Read More](#)

**SKU:** 01083

**Price:** ₹300,000.00 inc. GST

**Stock:** instock

**Categories:** [Nataraja Statues](#), [Hindu Statues](#), [Statues & Sculptures](#)

### Product Description

The Khanja work Nataraj statue is is a gorgeous piece with fine detailing throughout. Expressive detailing makes this Nataraj statue especially artful. **Material:** Pink stone / Soapstone **Height:** 3 ft (approx.) **Dimension(HWL):** 33.5 x 21 x 12.5 inch **Position:** Dancing  
**Few traits of the ravishing Indian statues:**

- The tousle hair of Lord Shiva symbolizes him to be an ascetic.
- The rings of fire, enclose Lord Shiva represent the universe with all its illusion, pain, and suffering.
- The half-moon, in his hair Lord Shiva responsible for the creation of different seasons. The moon is also the deity of time, that's why Lord Shiva is called the Maha Kaala.
- Lord Shiva is the three-eye god. One is the sun, the second is the moon, and the third on the forehead is called the eye of wisdom.
- The cobra loop around his neck, chest and upper arms represent Kundalini Shakti.
- He is holding a pellet drum in his upper right hand and fire in a vessel in his upper left hand. The lower right is a gesture in Abhay mudra while the lower left is in Gajahasta mudra.
- He is seen dancing over the body of a demon called Apasmara. (a symbol of human ignorance)

### **" Lord Shiva" the cosmic dancer and the third god in the Hindu triumvirate:**

- Lord Shiva is the destroyer of the universe to re-create it.
- It is the startling dance of Lord Shiva. Which is a combination of Rudra Tandava and Ananda Tandava.
- The Nataraj dance represents five actions of Lord Shiva: creation, sustenance, dissolution, and covering from all the illusion and initiation.

### **Positioning of the monumental god's statues:**

- The Northeast corner is the most favorable place to set the statue, either in the house or even in the garden to the following corner.
- The Nataraj form of Lord Shiva is widely worshipped by dancers, so you can place him at the home/training room temple or in your school.
- Your living room, the entrance of the office, hotel, college, academic institution are a few more options where you can set the statue.

### **How to look after the decorative stone: Suggestions and tips.**

- The best thing about pink stone is that it is a nonporous material.
- So the handling and caring may not be so difficult for you.



- You can dust the statue by using a soft brush or a cloth over the surface.
- The cleaning should be done every other day to keep the dirt away from the statue.



## Soap Stone Khanja Work Maa Durga Statue 3 ft

[Read More](#)

**SKU:** 01082

**Price:** ₹450,000.00 inc. GST

**Stock:** instock

**Categories:** [Hindu Statues](#), [Maa Durga Statue](#), [Statues & Sculptures](#)

### Product Description



## Soap Stone Khanja Work Lord Ganesha Statue 2 ft

[Read More](#)

**SKU:** 01081

**Price:** ₹150,000.00 inc. GST

**Stock:** instock

**Categories:** [Ganesha Statues](#), [Hindu Statues](#), [Statues & Sculptures](#)

**Tags:** [New Style Ganesh Murti](#)

## Product Description

Soap Stone Khanja Work Lord Ganesha Statue 2 ft the captivating structure is a true portrayal of the idol from the altar crafted with details. The riveting artwork of Odisha narrates the allurements of the proficient hands of artisans. Lord Ganesha has many elements holding each of his arms which characterize different meanings.

**Material:** Soapstone/Pink stone **Height:** 2 ft (approx.) **Dimension(HWL):** 26 x 17 x 10.5 inch

**Position:** Dancing

Lord Ganesha holds an Ankush in the right upper arm, which signifies to move on the righteous path his devotee, the upper left-hand bearing noose, which is a symbol that he will capture all the odd and hardship from his devotee's pathway. With axe Lord Ganesha repel the obstacle of his devotee, the rosary in his hand depicts once persuasion of knowledge over spirituality never gets stopped. The broken tusk illustrates his sacrifice and devotion towards his work one should learn from. Finally, the pot full of sweets is a reward for the awakened soul and the right path you moved for. The god's statue's left leg is bent and folded, while the right leg is resting on the ground, it is called the **urdhavajana** dance of lord shiva. His mount rat, the mushika is a symbol of inner desires, illuminating our inner self with the light of knowledge and controlling of our desire. The stone sculptures are also crafted with many ganas who are hosts of lord shiva. Ganesha has always blessed his devotee's fulfillment of goals and self-realization, along with auspicious benefits of wisdom, prosperity, and success. He removes all the sins of his devotees and removes the obstacles from his pathways. Not only the spiritual benefits the Ganesha statue will redefine your decor statement too. This beautiful sculpture is enough to elevate the look of any space. **Placing:** Place with an aim to bring positivity in your office or home, it is recommended to place the statue facing north direction. West and northwest are also favorable. **Care:** Boom or dry cloth for dusting is best to keep the dirt away from the statue. "***Feel the abundance of peace and serenity in your space with this masterpiece.***"

---



## Big Size Lord Jagannath with Boundary Soft Stone Statue

[Read More](#)

**SKU:** 01080

**Price:** ₹350,000.00 inc. GST

**Stock:** outofstock

**Categories:** [Hindu Statues](#), [Jagannath Idol](#), [Statues & Sculptures](#)

### Product Description

---



## Medium Size Lord Jagannath with Boundary Soft Stone Statue

[Read More](#)

**SKU:** 01079

**Price:** ₹90,000.00 inc. GST

**Stock:** onbackorder

**Categories:** [Hindu Statues](#), [Jagannath Idol](#), [Statues & Sculptures](#)

### Product Description

---





## Soap Stone Touchwood finish Jagannath Temple Statue 9.5 in

[Read More](#)

**SKU:** 01078

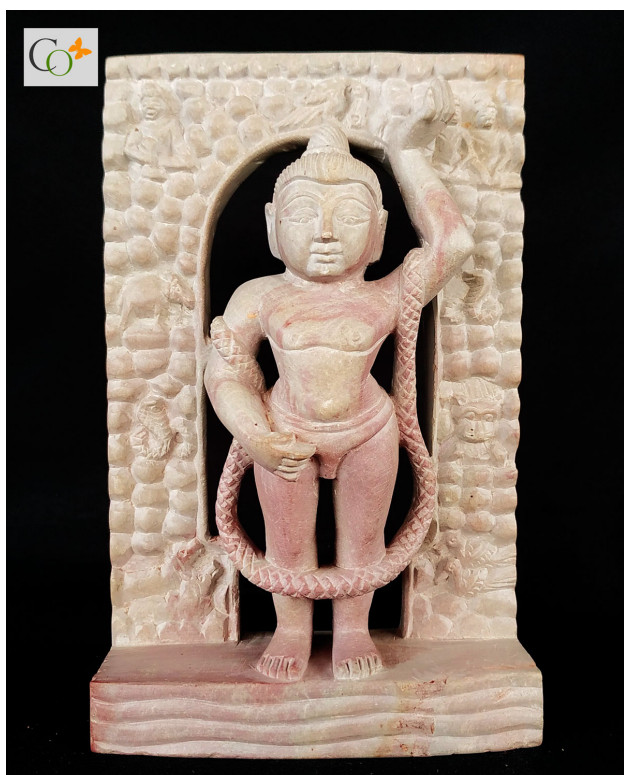
**Price:** ₹12,000.00 inc. GST

**Stock:** outofstock

**Categories:** [Hindu Statues](#), [Jagannath Idol](#), [Statues & Sculptures](#)

### Product Description

---



## Soap Stone God Shrinath ji Statue 6 in

[Read More](#)

**SKU:** 01074

**Price:** ₹9,000.00 inc. GST

**Stock:** instock

**Categories:** [Hindu Statues](#), [Krishna Statues](#), [Statues & Sculptures](#)

### Product Description

---



## Soap Stone Shrinath ji God Statue 9 in

[Read More](#)

**SKU:** 01075

**Price:** ₹15,000.00 inc. GST

**Stock:** instock

**Categories:** [Hindu Statues](#), [Krishna Statues](#), [Statues & Sculptures](#)

### Product Description

**An iconic addition to giving a glam treatment with details, the Soap Stone Shrinath Ji God Statue with endless decorative possibilities throughout the home.**

**Material:** Soapstone / Pink stone

**Dimension(HWL):** 9 x 5 x 2 inch

**Position:** Standing

### A thorough explanation of the adorable statue of Shrinath Ji:

- The above statue presents the Balak Swarup of Lord Krishna, "Shrinath Ji".
- The idol of Shrinathji in the temple of Nathdwara portrays the child Krishna lifting the Govardhana Giri. His left hand is shown in a raised position, with the right fist clenched and resting at the waist. A large diamond is placed just beneath his lips.
- A simple top tangle on the hair, with a calm face, no bold embellishments, standing over a substructure makes the sculptures look subtle.

### God Shrinath Ji: The living child of Nathdwara

- The deity at the famous Vaishnav temple of Shri Nathdwara in Rajasthan (India) is known as SHRINATHJI.

- Situated at the temple town of Nandadwara.
- Initially, he was worshiped in the name of Gopala, later termed "Shrinath Ji".
- This Swaroop in reality is that of Lord Shri KRISHNA.
- SHRINATHJI represents child Krishna when He was seven years of age.
- Shri Vallabhacharya named him Gopala and the place of his worship as 'Gopalpur'. Later, Vitthal Nathji named the deity Shrinathji.

### **Hacks to make your home looks uniquely different:**

- According to Vaastu Sashttra, the idol should be put in the Northeast corner.
- Your selection of statement pieces shows your unique point of view. A pretty idol of Lord Shrinath Ji over floating or hanging shelves.
- A glass or china cabinet, or an accent shelving unit will surpass the atmosphere.
- You can use it for worship objectives at the temple of your home, or office.
- The statue resting over the sideboard & console of the passageway or corridor also prettifies the decor.
- Make it a unique religious gift for the most auspicious occasion of your friends and family.

### **The benefit of Shrinath Ji:**

- Lord Shrinath is always bestowed good upon his devotee.
- The devotee will gain peace of mind & happiness throughout his life.

### **Some caring tips for your home decor:**

- Soft stone home decor items require effortless cleaning.
  - Because of their sturdiness, you only need a soft cloth to buff the statue all over, to prevent it from dirt and dust.
  - Cleansing it from time to time will be sufficient to get rid of any debris or dust over the home decor sculpt.
-





## Soapstone Chakra Style Lord Shiva Sitting Statue 4 in

[Read More](#)

**SKU:** 01042

**Price:** ₹6,000.00 inc. GST

**Stock:** onbackorder

**Categories:** [Hindu Statues](#), [Shiv Ji Statues](#), [Statues & Sculptures](#)

### Product Description

---



## Soapstone Chakra Style Maa Lakshmi Statue 4 in

[Read More](#)

**SKU:** 01041

**Price:** ₹6,000.00 inc. GST

**Stock:** onbackorder

**Categories:** [Hindu Statues](#), [Maa Lakshmi Statues](#), [Statues & Sculptures](#)

### Product Description

Get artistic with the magnificent piece from CRAFTS ODISHA. The gorgeous 4 inch statue of Maa Lakshmi adds subtle flair to any décor theme. **Material:** Pink Soapstone **Dimension(HWL):** 3.9 x 2.7 x 1.1 inch **Position:** Sitting Statue

### **A mesmerizing sculpture:**

- The lovely statue of Goddess Laxmi is sitting on a Simhasan with a lotus base.
- The light smile on the face and delicate carving are enough to mesmerize the statue.
- The fabulous graven image is made by the brilliant arts man of Odisha, where stone engraving is globally famous for its intricate design.

### **Laxmi; The paragon of good luck**

- She is married to "Vishnu". Lord Vishnu represents all that masculine and Laxmi represents all that feminine. Together they called as Laxmi-Narayana.
- She was admired as the Goddess of wealth prosperity, fortune, and power.
- She was born out from the ocean of milk at the time of its churning.
- The household goddess of most Hindu families and is worshipped daily.
- She has generally worshipped in Diwali (the festival of light) and also in Sharad Purnima(the festival of harvest).

### **Direction and placement suggestion:**

- The dainty statue should be placed in the North or east part of the Northeast corner of the home or office.
- You can use the tiny-winy sculpture of your temple of home, office, and shop.
- The tiny sculpt can be placed on the cupboard, showcase, or any bookshelf of the living room and office.
- You can even place it on the dashboard of your car and present your dear.
- Gift your dear one at their special event.

### **The graciousness of keeping the stone sculptures:**

- She bestows her devotees with wealth and progeny.
- She provides good fortune and bestows her devotees with prosperity.
- She is also known as "Moksha Pradayini", freeing one from the liberation( cycle of death and rebirth).
- The worshiper also gets beauty, success, and knowledge.

### **How to clean:**

- The miniature structure is made from Soapstone.

- Soapstone is weather-resistant and durable.
- To clean off the sculpt, take a piece of dry cloth to wipe down the surface.
- Clean it time to time, to keep the dust away from the stone sculpture.



## Soapstone Chakra Style Lord Buddha Statue 3.5 in

[Read More](#)

**SKU:** 01040

**Price:** ₹5,000.00 inc. GST

**Stock:** onbackorder

**Categories:** [Sitting Buddha Statues](#), [Buddha Statues](#), [Statues & Sculptures](#)

### Product Description

Soapstone Chakra Style Lord Buddha Statue 3.5 inch . Loaded with expressive detail, make this statue artful. Capable of capturing the sense of elegance.

**Material:** Soapstone/Pinkstone **Dimension(HWL):** 3.5 x 2.7 x 1.1 inch **Position:** Sitting  
A prince by born, son of a King of the Shakya tribe named Shudhodana. Lord Gautama was brought up with all luxury and lush spent unaware of any worldly pain and sorrow of the outside world. Until the age of 29, he was married and had a son. One day he wanders out of the palace when he saw an old person, a sick and a dead man being carried to the cremation ground. These scenes disturbed and make him realize that no man on earth can escape from the definite reality of suffering. When he saw a holy man walking down the street, with a peacefulness on his face. That night Lord Buddha left all the royal and lavish life to find a way to overcome the fear of the harsh reality of universal truth. For six long years hunting for the answer, he finally found the answers. In Bodh Gaya under a fig tree with deep meditation and concentration. The story of this form of pose underneath when Maara king of demon tried to deprive Lord Gautama of achieving his goal, so he tried to scare him and tempted him, realizing this Lord Gautama lowered his right hand to touch the earth the goddess to be the witness of his success. Earth goddess appeared and flooded out the demon Maara. The earth-



touching form of Lord Buddha represents sitting in a lotus, on Vajrasana pose. The right hand was flat on the right knee, fingers pointing towards the ground, palm faced upward. The left hand resting on the lap, in vitarka mudra and closed eyes completely in deep meditation. Bhumisparsha mudra depicts the indestructible form of Lord Buddha. Keeping this statue transmutes anger into wisdom, is beneficial for calming the mind and reducing the anxiety level. **Placement:** The statue should always face east, where the sun rises. You can keep it on desk, library, living room, study room, mantel, etc. A perfect choice for the spiritual gift. **Care:** Dusting the statue with a cloth or broom will be enough to keep the glam.



## Soapstone Chakra Style Nataraj Statue 4 in

[Read More](#)

**SKU:** 01039

**Price:** ₹6,000.00 inc. GST

**Stock:** onbackorder

**Categories:** [Nataraja Statues](#), [Hindu Statues](#), [Statues & Sculptures](#)

### Product Description

The Chakra style 4 inch Nataraj's statue is a subtle tone for bold and artful appeal in the ambiance of décor with Endless decorative possibilities. the piece would make a nice compliment by keeping things simple. **Material:** Pinkstone / Soapstone **Dimension(HWL):** 3.9 x 2.7 x 1.1 inch **Position:** Dancing The striking attributes of the Nataraj stone sculptures:

- Lord "Shiva" means the auspicious one, and his dancing form is known as the Nataraj.
- The tousled hair of Lord Shiva symbolizes him to be an ascent also symbolizing the air element.
- The rings of fire, surrounding Lord Shiva represent the universe with all its illusion, pain, and suffering.

- The semi-circle moon, in his hair, is to bestow the material pleasure. The moon is also the deity of time, that's why Lord Shiva is called the Maha Kaalaa.
- Lord Shiva is widely known as Trinetra (tri eyed), one is the sun, the second is the moon, and the third on the forehead is called the eye of wisdom.
- The cobra creeping around his neck, chest, and upper arms represent cosmic energy.
- He is seen holding a Damru in his upper right hand, gestures to Abhay mudra in the lower right hand. The upper left-hand carries Agni in a vessel, and the lower left hand is posed in Gajahasta mudra.
- Lord Shiva dances over the body of a demon named Apasmara. (a symbol of human ignorance).

### **The "Adi Shakti " of the trinity:**

- Lord Shiva is the destroyer, preserver, and creator of the universe.
- Nataraj's form of dance is the combination of Rudra Tandava and Ananda Tandava.
- This form of dance represents five actions of God: creation, sustenance, dissolution, and covering from all the illusion and initiation.

### **Few effective suggestions for craft decoration:**

- The Northeast which is known as Ishanya Kona is the best-recommended place to install the statue, either in the house or even in the garden concerning the following corner.
- The artist of the dancer community widely worships the Nataraj form of Lord Shiva. So, you can place him at the home/ training room temple or in your school.
- You can décor the statue on the altar desk, sideboard, or on a heightened table.
- Showcase of your living room, the office is a few options to showcase the statue.

### **Helpful tips and guides to follow for the Nataraj statue:**

- The benefit of the pink stone is that it is a nonporous material.
  - This feature made it easy for handling and caring.
  - Using a soft brush or a piece of fiber cloth over the surface of the statue for dusting.
  - No specific interval has to follow for cleaning, wiping in every other day is enough to ward off the dust.
-



## Soapstone Chakra Style Center Trunk Ganesha Statue 4 in

[Read More](#)

**SKU:** 01038

**Price:** ₹6,000.00 inc. GST

**Stock:** onbackorder

**Categories:** [Ganesha Statues](#), [Hindu Statues](#), [Statues & Sculptures](#)

**Tags:** [New Style Ganesh Murti](#)

### Product Description



## Soapstone Chakra Style Saraswati Devi Statue 4 in

[Read More](#)

**SKU:** 01037

**Price:** ₹6,000.00 inc. GST

**Stock:** onbackorder

**Categories:** [Saraswati Statues](#), [Hindu Statues](#), [Statues & Sculptures](#)

**Tags:** [Ma Saraswati Stone Statue](#), [Pink Soapstone Saraswati Idol](#), [Saraswati Idol for Home Temple](#), [Saraswati Sculpture Manufacturer in India](#), [Sitting Saraswati Statue](#), [Stone Maa Saraswtati Statue for Ashram Temple](#), [Stone Saraswati Statue Manufacturer](#), [Artisan in India](#)



## Product Description

Bring visual interest to your décor theme with the Chakra Style 4 inch Saraswati Devi statue. A sculptural appeal by maintaining the minimalist profile. **Material:** Pink Soapstone

**Dimension(HWL):** 3.9 x 2.7 x 1.1 inch **Position:** Sitting Statue

### A well-made stone sculpture:

- The dainty statue of Goddess Saraswati sitting on a lotus plinth, a chakra behind.
- A calm and soothing facial expression of the idol is brilliantly displayed by the artisan.
- The lotus pedestal is engraved on a Simhasan with a delicate design, making the sculpture more striking.
- The incredible carving is made by the efficient artificer of Odisha, where stone carving is famous worldwide.

### Saraswati: The Goddess of wisdom

- Saraswati means the essence of self and also means flow of water.
- She is the wife of the creator of the universe "Lord Bramha".
- She is widely worshipped as the goddess of learning, wisdom, music, and art.
- Vasant Panchami of Magha month is celebrated as her birthday as a pan India celebration.

### Placement ideas and direction of the fascinating stone sculptures:

- In conformity with Vaastu, The idol should be placed in the West-Southwest direction.
- You can place it in your temple of home and office too.
- The statuette can be embellished in the tiny space of your cabin, cupboard, showcase, etc of the office and home.
- A pleasant gift to present your dear one at their special events.

### Benefits of keeping the Maa Saraswati idol:

- She removes the darkness of the heart and shows the righteous path to her devotee.
- She blessed her devotee with eternal wisdom and intellect.
- Keeping an Idol of the Goddess in the temple is proves to be very auspicious in all walks of life.

### Guide for cleaning the stone sculptures:

- The statue is made of durable stone-like Soapstone.
- Soapstone is considered weatherproof and low maintenance.

- For the dusting of the stone sculptures, take a piece of cloth or a small brush over the surface.
  - The dusting should be done time to time, to keep the dust away from the surface of the stone sculptures.
- 



## Soapstone Chakra Style Left Trunk Ganesha Statue 4 in

[Read More](#)

**SKU:** 01036

**Price:** ₹6,000.00 inc. GST

**Stock:** onbackorder

**Categories:** [Ganesha Statues](#), [Hindu Statues](#), [Statues & Sculptures](#)

**Tags:** [New Style Ganesh Murti](#)

### Product Description

---



## Soapstone Chakra Style Maa Kali Statue 4 in

[Read More](#)

**SKU:** 01035

**Price:** ₹6,500.00 inc. GST

**Stock:** onbackorder

**Categories:** [Kali statue](#), [Hindu Statues](#), [Statues & Sculptures](#)

### Product Description

Looking for a little less in size that screams an artistic masterpiece, then Crafts Odisha has restored the best for you the "Soapstone chakra style Maa kali statue" a feast to an eye. **Stone Type:** soapstone / pink stone **Height:** 4 inch (approx.) **Dimensions(HWL):** 3.9 x 2.7 x 1.1 inch **Position:** Standing **Goddess "Kali" the fierce goddess :**

- The aggressive statue of Maa Kali is standing on the calm and prostrate Lord Shiva.
- She is wearing a garland, made of severed heads, a skirt of arms, and a tongue sticking out.
- Two hands are held in blessing: One is in Abhay Mudra other is conferring boon. In the other two hands, she is holding a severed head and a *Khadga* on the other.
- The piece is hand-carved by the brilliant artisans of Odisha. Where the stone carving has gained worldwide recognition for its carving.

### Maa Kali:: The Goddess of perseverance:

- She is the personification of Goddess Parvati, consort of Lord Shiva.
- The word Kali stands for "Force of times".
- She symbolizes the death of the ego, liberation, and embodiment of time.
- Her arrival conveys a strong message of the superiority of nature over man, even a powerful Lord like Shiva is motionless in front of her.



### The home statue décor of Maa Kali:: suggestion with benefits:

- The idol of Maa kali should be facing the south, whether it is in your home or any other place. Because the South zone serves as the zone of fame and relaxation. So as, goddess Kali is the embodiment of energy, which brings you fame and recognition.
- The Temple of your home or office, and shop will be a promising place to install the goddess idol.
- You can place the home décor sculpture at the console, sideboard, or showcase of your living room or office.

### How to take care of elegant home statue décor sculpture:

- The beautiful sculpture of the Goddess is made from a non-porous material like soapstone.
- For the dusting purpose use a soft fiber cloth or brush.
- The cleaning should be carried every alternate day to get rid of the dirt on the surface from accumulating.



## Soapstone Chakra Style Maa Sarawati Statue 4 in

[Read More](#)

**SKU:** 01034

**Price:** ₹6,000.00 inc. GST

**Stock:** onbackorder

**Categories:** [Saraswati Statues](#), [Hindu Statues](#), [Statues & Sculptures](#)

**Tags:** [Ma Saraswati Stone Statue](#), [Pink Soapstone Saraswati Idol](#), [Saraswati Idol for Home Temple](#), [Saraswati Sculpture Manufacturer in India](#), [Sitting Saraswati Statue](#), [Stone Saraswati Statue Manufacturer Artisan in India](#)

### Product Description

Best suited to embellish tiny spaces with perfectly balanced by providing rich earthy texture. The Saraswati statue features an interactive art element with dramatic elegance. **Material:** Soapstone / Pinkstone **Dimension(HWL):** 3.9 x 2.7 x 1.1 inch **Position:** Sitting

**Some aspects of the graven image :**

- The sculpture here is of Goddess Saraswati. Known as the goddess of knowledge.
- Sitting over a pedestal with her favorite instrument veena and Hindu scripture, gesturing in Abhay Mudra to her devotees.
- A miniature sculpture well carved with a sheer chisel, showcasing the virtuosity of the craftsman.

**Goddess Saraswati; Mother of Vedas:**

- In "Saraswati" the epitome of wisdom, learning, and knowledge.
- She is the consort of Lord Brahma, the creator of the universe.
- She has various names as Bharati, Shatarupa, Vedamata, Bramhi, Sarada, etc.
- Basanta Panchami is widely known as Saraswati Puja, falls on the 5th day of the month of Magha, the arrival of spring.
- Children are taught to write first time on the occasion of Basant Panchami.

**Some ideas and directions for the stone sculptures:**

- Vaastu recommends the West-Southwest direction for placing the idol, to improve concentration in study.
- You can use the sculpt in the temple of your home and office in the specified direction.
- You can place it on the study/ reception desk of the office/home or institute.
- Using a shelf to exhibit the statuette, along with a few more figurines would be eye-catching.
- The vacant space of your bookshelves and floating shelf can be a great way to grab the attention closely from the spectator.
- The car dashboard can be a place to put the sacred statuette.
- Gifting a holy idol of her to your dear one will always be appreciable.

**Blessing one would get by keeping the stone sculptures :**

- Not to forget she is Vidyadatri, so she always bestows her devotees in career and education.
- She is named Vakdevi the Goddess of speech and sound, so one will be blessed with divine speech.
- Fill one life with success, prosperity and remove all the obstacles to progress.

**Cleaning and caring of the tiny sculpture:**

- The statue is made of Soapstone, its advantage is its durability and shatter-proof.

- Dust the statuette with a clean soft cloth, every once in a while to keep the dust away from the sculpt.



## Soapstone Chakra Style Lakshmi Narasimha Statue 4 in

[Read More](#)

**SKU:** 01033

**Price:** ₹6,000.00 inc. GST

**Stock:** onbackorder

**Categories:** [Narasimha Statue](#), [Hindu Statues](#), [Statues & Sculptures](#)

### Product Description

A tiny-winy sculptural option that will help you to make your living room décor a focal point. The vintage Chakra style Laxmi Narasimha statue 4 inch from CRAFTS ODISHA to add your interior design. **Material:** Pink Soapstone **Dimension(HWL):** 3.9 x 2.7 x 1.1 inch **Position:** Sitting statue **Statue of Lakshmi Narasimha:**

- The statue is sitting on a layered lotus structure, and Goddess Laxmi is seen sitting on his lap.
- The statue is finished with a gleaming effect.
- With a human physique and lion head, the deity is seen holding a conch and Chakra in upper hands. The lower two were gesturing Varada mudra and Abhaya mudra.
- The sculpt is made by the magnificent artificer of Odisha, where stone carving is globally popular for its intricate carving.

### Regarding Lord Narsimha:



- Lord Vishnu has incarnated himself from time to time on earth, and Laxmi Narsimha is the fourth incarnation on the earth.
- Laxmi Nrusingha's avatar represents Lord Jagannatha. In this form, he is seen seated calmly with his consort Goddess Laxmi.
- This Avatar has been taken in Satya Yuga. To destroy evil, protect people from cruelty, and establish Dharma.
- Narasimha Chaturdasi is celebrated on every Vaisakha Chaturdashi (14th day) of the Shukla Paksha.

### **Suggestion and directions for placing the stone sculptures:**

- The north and northeast corner of the home or office is the permissible zone to place the divine idol, make sure to face him to the east while placing.
- The statue will perfectly fit in your tiny space of decors like the cabin, showcase, the cupboard of the living room, and office.
- Place it on your temple of home and office for Puja.
- You can set it on the dashboard of your car.
- An ideal present to please your dear one on their special occasion.

### **Variety of benefits one will get by keeping the stone sculptures:**

- Lord Lakshmi Narasimha provides forgiveness from sins and the cure of acute diseases.
- Protects one from negative impacts from planets, and evil forces.
- Lord Lakshmi Narasimha bestows the devotee with wealth, success, longevity, and the path to liberation.

### **How to clean the decorative stone:**

- The elegant decorative stone is made from Pink stone.
  - Pink soapstone is popular for its non-porous nature and durability.
  - Clean off the statue using a piece of cloth over the surface.
  - Keep dusting it periodically, to keep the glaze and ward-off dirt from accumulating.
-



## Soapstone Chakra Style Ganesha Statue 3.5 in

[Read More](#)

**SKU:** 01032

**Price:** ₹5,000.00 inc. GST

**Stock:** onbackorder

**Categories:** [Ganesha Statues](#), [Hindu Statues](#), [Statues & Sculptures](#)

**Tags:** [New Style Ganesh Murti](#)

### Product Description

---



## Soapstone Chakra Style Panchamukhi Ganesh Idol 4 in

[Read More](#)

**SKU:** 01031

**Price:** ₹9,500.00 inc. GST

**Stock:** onbackorder

**Categories:** [Ganesha Statues](#), [Hindu Statues](#), [Statues & Sculptures](#)

**Tags:** [New Style Ganesh Murti](#)

### Product Description

---



## Soapstone Chakra Style Panchamukhi Ganesh Statue 4 in

[Read More](#)

**SKU:** 01030

**Price:** ₹9,500.00 inc. GST

**Stock:** onbackorder

**Categories:** [Ganesha Statues](#), [Hindu Statues](#), [Statues & Sculptures](#)

**Tags:** [New Style Ganesh Murti](#)

### Product Description



## Soapstone Chakra Style Nataraj Statue 5.5 in

[Read More](#)

**SKU:** 01029

**Price:** ₹8,000.00 inc. GST

**Stock:** onbackorder

**Categories:** [Nataraja Statues](#), [Hindu Statues](#), [Statues & Sculptures](#)

### Product Description



The Chakra-style 5.5 inch Nataraj statue is not only a piece of elegant and heavenly decorative option to embellish your ambiance but also something a bit more offbeat than the traditional statue of deities. **Material:** Pink soapstone / pink soft stone **Dimension(HWL):** 5.5 x 3.5 x 1.5 inch **Position:** Dancing **The elementary demeanor of the delightful home statue décor:**

- In Nataraj form, Lord Shiva is in dancing form, which is designated for destruction.
- The straggly hair of Lord Shiva symbolizes him to be a Sannyasi also symbolizing the air element.
- The fire of rings, encircling Lord Shiva represents the universe with all its illusion, pain, and suffering.
- The semi-circle, in his hair, is to vouchsafe the material pleasure. The moon is also the deity of time, that's why Lord Shiva is called the Maha Kaala.
- Lord Shiva has three eyes, one is the sun, the second is the moon, and the third on the forehead is called the eye of wisdom.
- A cobra creeping around his neck, chest, and upper arms represent cosmic energy.
- He is holding a Damru in his upper right hand, gestures to Abhay mudra in the lower right hand. The Upper left hand carry Agni in a vessel, and the lower left hand is posed in Gaja-hasta mudra.
- Lord Shiva is seen dancing over the body of a demon named Apasmara. (a symbol of human ignorance)

### **The towering deity of the trinity:**

- Lord Shiva is the destroyer and creator and preserver of the universe.
- Nataraj is the combination of Rudra Tandava and Ananda Tandava.
- This form of dance represents five actions of Lord Shiva: creation, sustenance, dissolution, and covering from all the illusion and initiation.

### **How to display the impressive demiurge stone sculptures of Lord Shiva:**

- To place the Nataraj statue, Northeast is the best-recommended corner, either in the house or even in the garden concerning the following corner.
- You can install the statue over a console table, sideboard, or on a heightened table.
- The dance performers widely worship the Nataraj form. So, you can place him at the home/training room temple or in your school.
- The showcase of your living room, the office can also be proved to be a favorable one.

### **How to look after the decorative stone of "Nataraj": Guide and tips.**

- The plus point of the pink stone is that it is a nonporous material.

- The handling and caring made it easy for its property.
- You can dust the statue by using a soft broom, brush, and a piece of cloth over the surface.
- No specific interval has to follow for cleaning, a recurrent wiping is enough to ward off the dust.



## Soapstone Chakra Style Kali Maa Statue 5 in

[Read More](#)

**SKU:** 01028

**Price:** ₹7,500.00 inc. GST

**Stock:** onbackorder

**Categories:** [Kali statue](#), [Hindu Statues](#), [Statues & Sculptures](#)

### Product Description

With the beautiful piece of 5 inch chakra style kali maa statue, give your décor an impressive look. It's a stirring statement piece visually and conceptually. **Stone Type:** soapstone / pink stone **Dimensions(HWL):** 5.3 x 3.2 x 1.5 inch **Position:** Standing **Goddess "Kali" the aggressive form of Goddess Shakti :**

- The powerful statue of Goddess Kali is standing on the calm and prostrate Lord Shiva.
- She is wearing a garland of beheaded heads, a skirt of arms, and a bulging tongue.
- Two hands are held in blessing; one is in Abhaya Mudra other is conferring boon. In the other two hands, she is holding a decapitated head and a Khadga on the other.
- The masterpiece is well carved by the brilliant craftsman of Odisha. Which is famous, for its magnificent artwork.

**Maa Kali:: The Goddess of perseverance of mother nature:**

- She is the manifestation of Goddess Parvati, wife of Lord Shiva.
- The word Kali means "Force of times" in Sanskrit.
- She symbolizes the complete victory of the divine, overall death and destruction.
- Her arrival conveys a strong message of the primacy of nature over man, even a powerful Lord like Shiva is motionless in front of her.

### **The home décor statue of Goddess Kali:: Placement ideas and benefits:**

- The statue of Maa kali should be facing south, whether it is in your home or any other place. Because the South zone serves as the zone of fame and relaxation. So as, goddess Kali is the embodiment of energy, which brings you fame and recognition.
- The Temple of your home or office, and shop will be a promising place to install the statue.
- You can place the home decor statue on the console, sideboard, or showcase of your living room and office.

### **Caring tips for the home décor statue:**

- The delightful sculpture of the Goddess is made from a non-porous material like pink stone.
  - You can make use of a soft fiber cloth or brush over the surface of the statue.
  - The cleaning should be carried every other day to get rid of the dirt from the home décor sculpt.
-